

Transcriptional upregulation of human tissue kallikrein 6 in ovarian cancer: clinical and mechanistic aspects

SJC Shan^{1,2}, A Scorilas³, D Katsaros⁴ and EP Diamandis^{*,1,2}

¹Department of Laboratory Medicine and Pathobiology, University of Toronto, Toronto, Ontario, Canada; ²Department of Pathology and Laboratory Medicine, Mount Sinai Hospital, 600 University Avenue, Toronto, Ontario, Canada M5G 1X5; ³Department of Biochemistry and Molecular Biology, University of Athens, Athens, Greece; ⁴Department of Obstetrics and Gynecology, Gynecologic Oncology and Breast Cancer Unit, University of Turin, Turin, Italy

The human tissue kallikrein family (KLK for protein; *KLK* for gene) includes 15 members. Twelve kallikreins, including KLK6, are concurrently upregulated in ovarian cancer. However, the mechanism of this phenomenon remains unclear. In this study, we measured KLK6 expression in a large series of ovarian tissue cytosols and examined possible mechanisms of KLK6 up-regulation in ovarian cancer. Using a newly developed enzyme-linked immunosorbent assay (ELISA) with two monoclonal antibodies, we quantified KLK6 expression in ovarian tissue cytosols, and confirmed the upregulation of KLK6 in ovarian cancer and its unfavourable prognostic value. We then examined *KLK6* mRNA expression using reverse transcription–polymerase chain reaction and established its good concordance with KLK6 protein expression. This finding suggested that the *KLK6* gene is under transcriptional regulation. We then scrutinised a few mechanisms that could explain KLK6 upregulation. The relative abundance of two *KLK6* mRNA transcripts was studied; we found the same differential expression pattern in all samples, regardless of KLK6 levels. Genomic mutation screening of all exons and the 5′-flanking region of the *KLK6* gene identified two linked single-nucleotide polymorphisms in the 5′-untranslated region, but neither correlated with KLK6 expression. Ovarian cell lines were separately treated with five steroid hormones. None of the treatments produced significant effects on KLK6 expression. We conclude that KLK6 is transcriptionally upregulated in ovarian cancer, but probably not through alternative mRNA transcript expression, genomic mutation, or steroid hormone induction.

British Journal of Cancer (2007) **96**, 362–372. doi:10.1038/sj.bjc.6603556 www.bjcancer.com

© 2007 Cancer Research UK

Keywords: ovarian cancer; biomarker; serine protease; gene regulation; human kallikrein 6; human kallikreins

The human tissue kallikreins (KLKs) are a family of serine proteases that are aberrantly expressed in several cancer types. Most strikingly, 12 kallikreins (KLK2, KLK3, KLK4, KLK5, KLK6, KLK7, KLK8, KLK10, KLK11, KLK13, KLK14, and KLK15) are concurrently upregulated in ovarian cancer (Borgono and Diamandis, 2004). Many of these KLKs hold promise as prognostic and diagnostic biomarkers (Yousef *et al*, 2001, 2003b; Diamandis *et al*, 2002, 2003; Borgono *et al*, 2003; Kishi *et al*, 2003; Luo *et al*, 2003; Scorilas *et al*, 2004). Several of them have also been implicated in cancer progression and metastasis (Bernett *et al*, 2002; Magklara *et al*, 2003; Becker *et al*, 2004). Evidently, kallikrein upregulation in ovarian cancer has significant relevance to cancer detection, management, and treatment. Understanding the mechanisms underlying their upregulation will allow for a better definition of kallikreins' role in ovarian cancer pathophysiology and their clinical utility as prognostic and/or diagnostic biomarkers or therapeutic targets.

The human tissue kallikrein genes (*KLKs*) are located in tandem on chromosome 19q13.4, and show significant structural

homology (Yousef and Diamandis, 2001). Hence, the 12 kallikreins concertedly overexpressed in ovarian cancer may share a common regulation machinery. On this basis, we investigated the regulation of one kallikrein, human tissue kallikrein 6, as a model system. The findings may also prove applicable to other kallikreins. The *KLK6* gene spans 10.5 kb of genomic sequence on the kallikrein locus (Figure 1A) (Yousef *et al*, 1999). The KLK6 protein is normally expressed in adult brain, salivary gland, lung, colon, kidney, breast, uterus, fallopian tube and placental tissues, and secreted into numerous biological fluids (Diamandis *et al*, 2000; Petraki *et al*, 2001). Ample evidence supports the overexpression/increase of human KLK6 in both ovarian tumours and presurgical serum of patients with ovarian cancer (Hoffman *et al*, 2002; Diamandis *et al*, 2003; Yousef *et al*, 2003a). Nevertheless, few experiments have been conducted to delineate the processes underlying this upregulation.

In this study, we first quantified KLK6 expression, using a newly developed immunoassay with two monoclonal antibodies, in a relatively large series of ovarian cancer tissue specimens, and confirmed the prognostic value of KLK6 for ovarian cancer. We then assessed the correlation between *KLK6* mRNA and KLK6 protein expression in order to determine whether KLK6 is under transcriptional or translational upregulation. Lastly, we examined the role of alternative transcripts, genetic aberrations, and steroid hormones in the upregulation of KLK6 in ovarian cancer.

*Correspondence: Dr EP Diamandis, Department of Pathology and Laboratory Medicine, Mount Sinai Hospital, 600 University Avenue, Toronto, Ontario, Canada M5G 1X5; E-mail: ediamandis@mtsinai.on.ca
Received 7 August 2006; revised 20 November 2006; accepted 27 November 2006

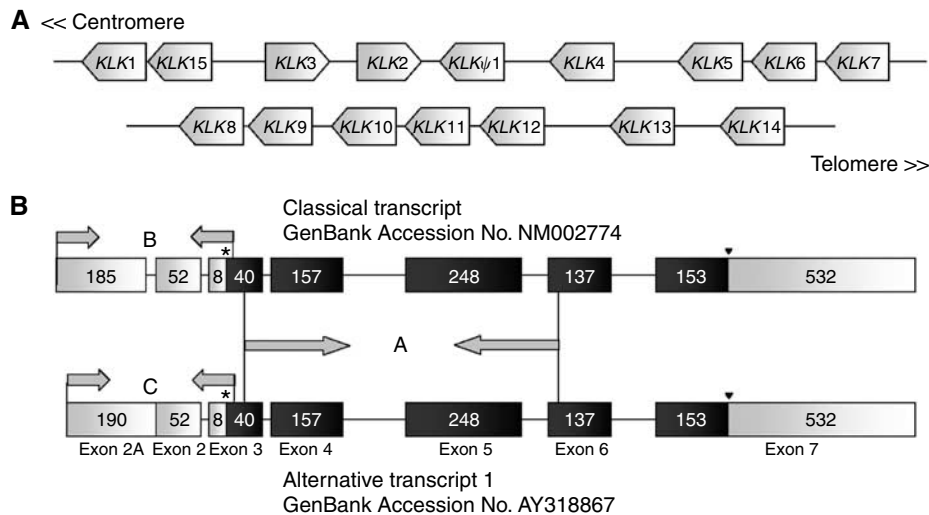


Figure 1 (A) Fifteen *KLK* genes are located in tandem on chromosome 19q13.4. (B) Genomic structures of the *KLK6* 'classical transcript' (GenBank accession no. NM002774) and the 'alternative transcript 1' (GenBank accession no. AY318867). Black regions denote coding exons, white regions denote 5'- and 3'-untranslated regions. Segment A arrows indicate primer locations for PCR amplification of all full-length *KLK6* transcripts. Segments B and C arrows indicate primer locations for differential PCR amplification of the *KLK6* 'classical transcript' and the 'alternative transcript 1', respectively. Asterisks and triangles indicate translation start sites and stop codons, respectively.

The human tissue kallikreins exhibit considerable transcriptional complexity. Through usage of alternative promoters and other mechanisms, each *KLK* gene can generate numerous alternative transcripts (Landry *et al*, 2003; Pampalakis *et al*, 2004). Some of these transcript variants have been shown to be specifically overexpressed in ovarian cancer (Dong *et al*, 2001, 2003; Magklara *et al*, 2001). *KLK6* has four alternative transcripts encoding for the full-length *KLK6* protein and four that may encode for truncated proteins (Kurlender *et al*, 2005). The longest *KLK6* transcript (GenBank accession no. NM002774), also known as the 'classical transcript', consists of 1512 nucleotides and seven exons. *KLK6* 'alternative transcript 1' has 1517 nucleotides (GenBank accession no. AY318867); it lacks exon 1 but contains a unique sequence at the 5'-end of exon 2, denoted as exon 2A (Figure 1B). Christophi *et al* (2004) found that these two mRNA transcripts were expressed in a tissue-specific manner and were differentially regulated in response to central nervous system injury. Whether or not an analogous situation occurs in ovarian cancer has not been investigated. To this end, we differentially amplified these two transcripts and examined their expression patterns in ovarian tumour tissues.

Another potential regulatory mechanism of the kallikreins is genetic variation. Even though intragenic mutations have not been identified for the kallikrein genes examined to date, *KLK3* (Majumdar and Diamandis, 1999) and *KLK10* (Liu *et al*, 1996), a plethora of single-nucleotide polymorphisms (SNPs) exist within *KLK* coding and promoter/enhancer regions and may have clinical significance. For example, SNPs in the *KLK3* promoter may account for individual variation in serum prostate-specific antigen levels and even cancer susceptibility (Tsuyuki *et al*, 1997; Xue *et al*, 2000; Cramer *et al*, 2003). Similarly, a nonsynonymous SNP in exon 3 of *KLK10* is associated with a higher prostate cancer risk (Bharaj *et al*, 2002). The *KLK6* locus in ovarian cancer patients has not previously been scrutinised for genetic aberrations. Hence, we sequenced all *KLK6* exons and the 5'-flanking region for ovarian tumours with various *KLK6* levels to determine if genetic aberrations may account for the upregulation of *KLK6* in ovarian cancer.

Lastly, various *in vitro* and *in vivo* studies collectively demonstrate that most, if not all, kallikreins are under steroid

hormone regulation in endocrine-related tissues and cell lines (Borgono and Diamandis, 2004). Whereas some kallikreins, such as *KLK3* (Riegman *et al*, 1991) and *KLK4* (Nelson *et al*, 1999), are regulated by androgens, others, such as *KLK5* (Yousef and Diamandis, 1999), are more responsive to oestrogens. A role for the steroid hormones in the regulation of *KLK6* was first suggested by the discovery of several hormone-related response elements, including sterol regulatory element binding protein 1 and 2, progesterone receptor binding site and cAMP response element-binding protein in the 5'-flanking region of the *KLK6* gene (Christophi *et al*, 2004). It was subsequently supported by the findings that *KLK6* was significantly up-regulated by norgestrel, oestradiol and DHT in the breast cancer cell line BT474 (Yousef *et al*, 1999). In this study, we examined whether or not steroid hormones regulated *KLK6* expression in ovarian cancer cell lines.

Our results confirmed the value of *KLK6* as an unfavorable prognostic biomarker for ovarian cancer. We also found *KLK6* to be under transcriptional regulation. Our data have further suggested a minor role for alternative transcripts, genetic mutations and steroid hormones in the regulation of human kallikrein 6 in ovarian cancer.

MATERIALS AND METHODS

Tissue sample collection

We examined 259 patients with ovarian cancer, 49 with benign ovarian conditions (including endometriosis, mucinous cystadenomas, serous cystadenomas, dermoid cysts, ovarian benign teratomas and corpus luteum), 43 with nonovarian tumours that metastasised to the ovary, and 34 apparently normal women. Participants' age ranged from 19 to 89 years, with a median of 58 years. All tissue samples were collected between April 1988 and April 2003 at the Gynecologic Oncology and Breast Cancer Unit, University of Turin, Italy. Identical specimen collection and processing protocols were used for all participants. During surgery, histologic examination was performed on the ovarian tissues through intrasurgery frozen section analysis, which allowed representative portions of each tumour containing more than 80%

tumour cells to be selected. All tumour samples collected were snap-frozen in liquid nitrogen and stored at -80°C until extraction.

At the time of surgery, clinicopathologic information including tumour stage, grade, histotype, residual tumour size, and debulking success were documented. Tumours were staged according to the Fédération Internationale des Gynaecologistes et Obstétristes (FIGO) criteria (Pettersson, 1994) and graded according to the Day *et al.* (1975) protocol. Tumour histotypes were classified based on the World Health Organization (WHO) and FIGO recommendations (Serov *et al.*, 1973). Patients with ovarian cancer at all stages (I–IV) and grades (1–3) were represented in our study. Of the 259 ovarian tumours, the majority (110; 42%) were of serous papillary histotype, followed by endometrioid (46; 18%), undifferentiated (33; 13%), mucinous (20; 8%), clear cell (18; 7%), or other nonepithelial types (24; 9%).

After surgery, we monitored the patients with ovarian cancer for clinical response to chemotherapy and survival outcomes for a median duration of 52 months. Follow-up information was available for 232 patients, of whom 147 (63%) had relapsed and 117 (50%) had died.

All investigations were carried out according to the ethical standards of the Helsinki Declaration of 1975 (revised in 1983), and were approved by the Institute of Obstetrics and Gynecology, Turin, Italy, and the Institutional Review Board of Mount Sinai Hospital, Toronto, Canada.

Preparation of cytosolic extracts

Snap-frozen tissues (20–100 mg) were homogenised in liquid nitrogen to a fine powder and added to 10 volumes of extraction buffer (50 mM Tris, pH 8.0, 150 mM NaCl, 5 mM EDTA, and 1% NP-40 surfactant). The resulting mixtures were incubated on ice for 30 min, with repeated vortexing every 10 min, and then centrifuged at 14 000 r.p.m. at 4°C for 30 min. The supernatant (cytosolic extract) was collected and stored at -80°C until further experiments. Total protein concentration of the extracts was determined using the bicinchoninic acid method. Bovine serum albumin was used as standard (Pierce Chemical Co., Rockford, IL, USA).

Measurement of KLK6 and CA125 protein expression in ovarian cytosolic extracts

The concentration of KLK6 was quantified with a highly sensitive and specific ‘sandwich-type’ immunoassay recently developed in our laboratory. Two KLK6-specific monoclonal mouse antibodies were used: the coating antibody (clone 27-4) and the detection antibody (clone E24). The assay has a detection limit of $0.05 \mu\text{g l}^{-1}$, a dynamic range up to $20 \mu\text{g l}^{-1}$, and does not cross-react with any other members of the kallikrein family. White polystyrene microtiter plates were first coated with $100 \mu\text{l}$ of the coating antibody solution (5 mg l^{-1} of the anti-KLK6 monoclonal antibody clone 27-4 in 50 mM Tris-HCl buffer, 0.05% sodium azide, pH 7.8). The plates were incubated overnight at room temperature and then washed three times with the washing buffer (5 mM Tris-HCl buffer, 150 mM NaCl, 0.05% Tween-20, pH 7.8). After washing, assay standards (KLK6 recombinant protein produced in-house (Diamandis *et al.*, 2000)) or ovarian cytosolic extracts were added to the wells in duplicates ($100 \mu\text{l well}^{-1}$) after being diluted two-fold in assay buffer (50 mM Tris-HCl buffer, 6% bovine serum albumin, 0.01% goat globulin, 0.005% mouse globulin, 0.1% bovine globulin, 0.5 M KCl, 0.05% sodium azide, pH 7.8). The plates were incubated for 2 h with shaking at room temperature and washed six times. Subsequently, $100 \mu\text{l}$ of the biotinylated detection antibody solution ($250 \mu\text{g l}^{-1}$ anti-KLK6 monoclonal antibody clone E24 in assay buffer) was added to each well. The plates were incubated for 1 h at room temperature with shaking and washed six times. Then, $100 \mu\text{l}$ of alkaline phosphatase-conjugated (ALP) streptavidin

solution (Jackson ImmunoResearch) diluted 20 000-fold in bovine serum albumin buffer (6% bovine serum albumin, 50 mM Tris-HCl buffer, 0.05% sodium azide, pH 7.8) was added to each well. The plates were incubated for 15 min with shaking at room temperature and washed six times. Lastly, $100 \mu\text{l}$ of substrate buffer (0.1 M Tris-HCl buffer, 0.1 M NaCl, 1 mM MgCl_2 , pH 9.1), containing 1 mM diflunisal phosphate (DFP), was added to each well and incubated for 10 min with shaking at room temperature. Immediately after incubation, $100 \mu\text{l}$ of developing solution (1 M Tris-HCl buffer, 0.4 M NaOH, 2 mM TbCl_3 , 3 mM EDTA) was added to each well and incubated for 1 min with shaking at room temperature. The fluorescence was measured with a time-resolved fluorometer, the Cyberfluor 615 Immunoanalyzer (MDS Nordion), as described elsewhere (Christopoulos and Diamandis, 1992). The KLK6 concentrations in ng ml^{-1} were converted to $\text{ng of KLK6 mg}^{-1}$ of total protein to adjust for the amount of tumour tissue extracted.

CA125 levels (KU mg^{-1}) of ovarian tissue samples were measured with the Immulite 2000 assay (Diagnostic Products Corporation, Los Angeles, CA, USA).

Statistical analysis

The distribution of KLK6 concentration in the ovarian tumour cytosols was non-Gaussian. Therefore, we used the nonparametric Mann–Whitney *U*-test to determine differences among the four groups of samples. This test treated KLK6 concentration in the tumour cytosols (ng mg^{-1} of total protein) as a continuous variable. We also assessed the association between KLK6 and CA125 levels by determining the Spearman rank correlation coefficient (*r*) and associated *P*-values. The ovarian cancer patients were classified as KLK6-positive or KLK6-negative using the median (2.83 ng mg^{-1}) as the cutoff point. The relationship between KLK6 expression and several clinicopathologic variables was analysed with the χ^2 test and the Fisher’s exact test, as appropriate.

We then assessed the impact of KLK6 on patient survival by calculating the hazard ratio (HR), which is the relative risk of relapse or death in the KLK6-positive group, using the Cox univariate and multivariate proportional hazard regression models (Cox, 1972). Whereas progression-free survival (PFS) was defined as the time interval between the first surgery and the identification of recurrence or metastatic disease, overall survival (OS) was defined as the time interval between the first surgery and death. The multivariate models were adjusted for KLK6 expression in tumours and other clinicopathologic variables that may affect survival, including age, tumour grade, CA125 level, and histotype. We only included patients for whom the status of all variables was known in the multivariate models. Lastly, we constructed Kaplan and Meier (1958) PFS and OS curves for the KLK6-positive and KLK6-negative patients. The differences between the survival curves were assessed for statistical significance using the log rank test (Mantel, 1966). Patients were also classified as CA125-positive and CA125-negative using the median 1330 U mg^{-1} as cutoff, and we constructed Kaplan–Meier PFS and OS curves to evaluate the prognostic significance of CA125.

RNA extraction and RT-PCR

We selected eight tumour tissues (H1–H8) that over-expressed KLK6 (mean: 12.44 ng mg^{-1}), eight samples (L1–L8) that expressed minimal KLK6 (mean: 0.06 ng mg^{-1}), four benign ovarian samples (B1–B4; mean KLK6 expression: 0.05 ng mg^{-1}), and one normal ovarian sample (N1; KLK6 expression: 0.02 ng mg^{-1}). Total RNA was isolated from these samples using the TRIzol[®] method (Life Technologies Inc., Gaithersburg, MD, USA) as directed by the manufacturer. The yield and purity were determined spectrophotometrically by measuring the absorbance of aliquots at 260 and 280 nm. Two micrograms of total RNA were then reverse

transcribed using the SuperScript™ preamplification system (Life Technologies Inc.) in a final volume of 20 μ l. As control for the reverse transcription-polymerase chain reaction (RT-PCR), we used commercially available human brain total RNA (Clontech Inc., Mountain View, CA, USA). To test the success of our reverse transcription, 1 μ l of each cDNA product was PCR-amplified using primers specific for the housekeeping gene, β -actin (for primer sequences see Table 1), and visualised on 1.8% agarose gels stained with ethidium bromide.

PCR amplifications

To amplify the mRNA transcript variants that encode the full-length KLK6 protein (GenBank accession no. NM002774, AY318867, AY318869, and BC015525), we designed primers (for sequences see Table 1; Figure 1B) that anneal to a common region for all four variants (nucleotides 257–709; numbers refer to GenBank accession no. AY318867).

One microliter of first-strand cDNA template was amplified in a 25 μ l reaction mixture containing 10 \times PCR buffer (Qiagen Inc., Mississauga, ON, USA), 100 μ M dNTPs (deoxynucleoside triphosphates), 2.5 U of HotStar Taq DNA polymerase (Qiagen Inc.) and 100 ng of the appropriate primers in an Eppendorf thermocycler. Cycling conditions were as follows: enzyme activation at 95°C for 15 min; 32 cycles of denaturation at 95°C for 30 s, annealing at 65°C for 30 s, and extension at 72°C for 30 s; followed by a final extension at 72°C for 10 min. The KLK6 PCR product was visualised on 1.8% agarose gels stained with ethidium bromide. Gels were photographed under UV light with the Speedlight Gel Documentation System (Lighttools Research, Encinitas, CA, USA). Two independent observers examined the images to determine the presence or absence of KLK6 PCR-generated bands. Each amplification experiment was performed twice to ensure reproducibility of data.

To differentially amplify the 'classical transcript' and 'alternative transcript 1' (GenBank accession no. NM002774 and AY318867, respectively), which differ only in their 5'-untranslated regions (UTRs), we used two unique forward primers and the same reverse primer (for sequences, see Table 1; Figure 1B). The PCR reactions amplified nucleotides 1–285 for the 'classical transcript' (numbers refer to the sequence NM002774), and nucleotides 1–290 for 'alternative transcript 1' (numbers refer to the sequence AY318867). We ensured that the two primer sets had comparable annealing efficiency by conducting parallel PCR reactions with each primer set and equal amounts of plasmid DNA. These reactions generated PCR bands of similar intensity (Figure 5B). Cycling conditions for both amplifications were the same as described above, except for the annealing temperature, which was 61°C for both reactions. Only tumour samples H1–H8, which expressed high kallikrein 6 protein and mRNA, were used in this experiment. Normal human brain and ovarian cDNA templates were used as controls.

Genomic DNA extraction and mutation screening

An even representation of ovarian tumour tissues expressing high KLK6 ($n=9$; mean = 11.72 ng mg⁻¹) and low KLK6 ($n=9$; mean = 0.09 ng mg⁻¹), benign ovarian tissues ($n=8$; mean: 0.09 ng mg⁻¹), non-ovarian tumours that metastasised to the ovary ($n=6$; mean: 0.04 ng mg⁻¹), and normal ovarian tissues ($n=13$; mean: 0.06 ng mg⁻¹) were selected for genomic DNA extraction and sequencing. DNA was extracted using the QIAamp DNA mini Kit (Qiagen Inc.) according to the manufacturer's protocols, and its yield and purity were determined spectrophotometrically by measuring the absorbance of aliquots at 260 and 280 nm.

To design primers for mutation screening, we used KLK6 'alternative transcript 1' as template, as it was found to be the dominant transcript in the ovaries. We designed seven sets of

Table 1 Primer sequences used for PCR amplification and DNA sequencing

Amplicon	Sequence (5' → 3')	PCR product length (bp)	Annealing temp (°C)
β -Actin	F: ATCTGGCACCACACCTTCTA R: CGTCATACCTCTGCTTGCTG	835	62
Four KLK6 Transcripts	F: GAAGCTGATGGTGGTCTGAGTCTG R: AGACAGCAGATGGTGATTTCCTGAC	454	65
Classical Transcript	F: AGGCGGACAAAACCCGATTGTTC R: CTGCAGCAATCAGACTCAGACCAC	285	61
Alternative Transcript 1	F: AGAAGCATCTGGGACAGAACCAG R: CTGCAGCAATCAGACTCAGACCAC	290	61
KLK6 5'-Flanking	F: GTGCTGGGGTGCAGGGAGG R: CCCCCACGCTCTGCTCTTGG	503	67
Exon 2A+2	F: CTCCTTCCCTGGAGGCCTG R: GGGAGTTTTCTCGGAGCCTG	476	66
Exon 3	F: GGAGAGGATGCAGAGGGAGCAGACA R: TCCCCAATACCAGCCTCTTCTCC	210	65
Exon 4	F: ACTGGAGTTCATGTTGAGGGGATG R: CCTATGTCACCTCTGCTGACATC	614	66
Exon 5	F: CCCAGCTGGGGAAGACTGTGGG R: TGGCCCTCACCAATTTTCCC	457	67
Exon 6	F: GAGGGTGCCAATAGAAAAGAGG R: GTGACTTCGCTCTGCTCTGGCTG	314	66
Exon 7	F: ATCTGACTTCTCCTCTTCTCTGC R: GTGCCTTCTCGAGGGGAGG	816	65

F = forward, R = reverse. Thirty-five cycles per PCR except for the 'Four KLK6 Transcripts' (32 cycles). (PCR = polymerase chain reaction).

primers amplifying all exons and their flanking intronic sequences, as well as the 5'-flanking region (601 bp upstream of the putative transcription start site, numbers refer to the KLK6 genomic sequence, GenBank accession no. AF149289). Sequences of all primers are shown in Table 1. Polymerase chain reaction was carried out with 2 μ g of genomic DNA in a 25 μ l reaction mixture containing 10 \times reaction buffer, 100 μ M of dNTP, 1 U of Pfu Turbo Polymerase (Stratagene, La Jolla, CA, USA), and 100 ng of the appropriate primers. Pfu Turbo DNA polymerase was employed because of its high fidelity. The PCR cycling conditions were as follows: 3 min of enzyme activation at 95°C, 35 cycles of 1 min denaturation at 95°C, 45 s of annealing at a primer-dependent temperature (Table 1), and 1 min of extension at 72°C, followed by 10 min of final extension at 72°C. The extension time for each cycle was prolonged to 1 min and 30 s when amplifying the 5'-flanking region and exon 7, to compensate for the length of these PCR products. The success of the PCR reactions were evaluated by running 5 μ l of each PCR product on 1.8% agarose gels stained with ethidium bromide. The remaining of the PCR products was purified by treatment with exonuclease I (0.25 U) and shrimp alkaline phosphatase (0.25 U) (USB, Cleveland, OH, USA). Mixtures were incubated at 37°C for 15 min, and then at 85°C for 15 min. After purification, PCR products were directly sequenced using an automated DNA sequencer. The PCR product was sequenced again in the opposite direction if sequencing results showed a departure from the published sequence in GenBank (accession no. AF149289).

Cell lines and hormonal stimulation experiments

BG-1, CaOV3, and OVCAR-3 are ovarian cancer cell lines, purchased from the American Type Culture Collection (ATCC, Rockville, MD, USA) and grown in RPMI media (Invitrogen,

Carlsbad, CA, USA) containing 10% fetal bovine serum (FBS) (HyClone Laboratories, Inc., Logan, UT, USA). The human ovarian surface epithelium (hOSE) cell line was obtained from Dr Nelly Auersperg at the University of British Columbia. It was originally established by scraping human ovarian surface epithelial cells

($n = 3$) from the ovarian surface of overtly normal ovaries during laparoscopies for nonmalignant disorders (Kruk and Auersperg, 1992). The hOSE cells were cultured in medium 199:MCDB105 (1:1) (Life Technologies Inc.) with 10% FBS (HyClone).

All cell lines were cultured in plastic flasks to near confluency, aliquoted into six-well tissue culture plates, and then cultured to 75% confluency. Twenty-four hours before the hormonal stimulation treatments, the culture medium was changed into each cell line's respective medium containing 10% charcoal-stripped fetal bovine serum. Cells were grown in the new media for 24 h.

The steroid hormones used were estradiol, aldosterone, dihydrotestosterone (DHT), dexamethasone, and norgestrel. Each steroid hormone was dissolved in 100% ethanol, and added to the culture media in each well at a final concentration of 10^{-8} M and less than 1% ethanol. Controls were the cells stimulated with an equal amount of ethanol only. All cells were grown for 7 days after stimulation and the cell culture supernatant was collected for KLK6 measurement using the aforementioned immunoassay. These experiments were repeated three times to ensure reproducibility of results.

Table 2 Tissue KLK6 concentrations in four groups of patients

KLK6 (ng mg^{-1})	Mean \pm s.e. ^a	Median	Range	P-value ^b
Normal ($N = 34$)	0.31 ± 0.13	0.05	0.01–4.11	0.1^c
Benign ($N = 49$)	0.82 ± 0.36	0.09	0.01–16.0	$<0.001^d$
Ovarian cancer ($N = 259$)	5.89 ± 0.55	2.83	0.01–64.96	$<0.001^e$
Nonovarian cancer metastatic to ovary ($N = 43$)	0.83 ± 0.28	0.09	0.01–8.56	$<0.001^f$

^as.e.: Standard error. ^bCalculated by Mann–Whitney test. ^cBetween normal and benign groups. ^dBetween normal and ovarian cancer groups. ^eBetween benign and ovarian cancer groups. ^fBetween ovarian cancer and nonovarian cancer metastatic to ovary.

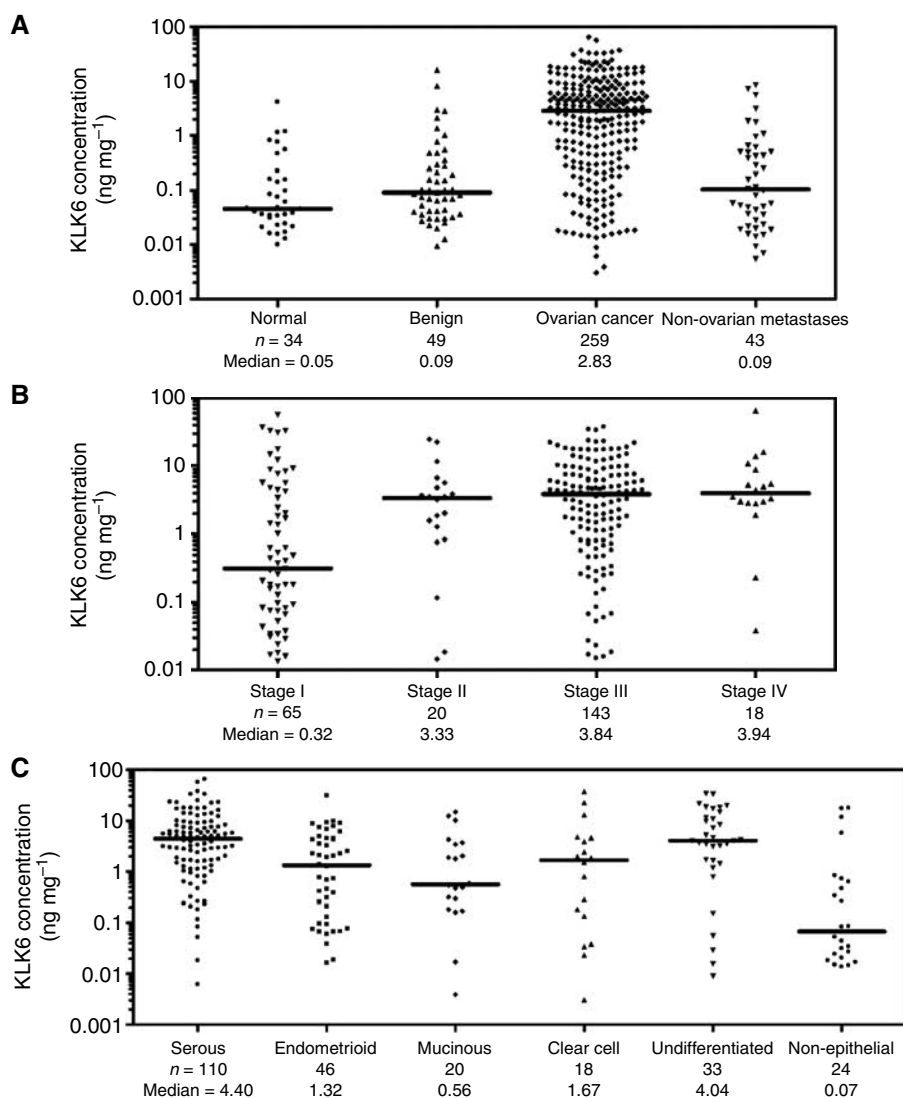


Figure 2 Distribution of KLK6 concentration in ovarian tissue cytosols. (A) Distribution of KLK6 concentration in apparently healthy women (normal); women with benign ovarian conditions (benign); women with ovarian cancer; and women with nonovarian cancers that metastasised to the ovaries (nonovarian metastases). (B) Distribution of KLK6 concentration in women with different stages of ovarian cancer. (C) Distribution of KLK6 concentration in various histotypes of ovarian cancer. Horizontal lines represent medians. n , number of samples.

RESULTS

Distribution of KLK6 concentration in ovarian tissues

The KLK6 protein concentration in normal ovarian tissues ranged from 0.01 to 4.11 ng mg⁻¹ of total protein, with a median of 0.05. Both benign ovarian tissues (median: 0.09; range: 0.01–16 ng mg⁻¹) and nonovarian tumours that metastasised to the ovary (median: 0.09; range: 0.01–8.56 ng mg⁻¹) also had relatively low KLK6 expression. Conversely, the protein concentration of KLK6 in the 259 ovarian tumour cytosols ranged from 0.01 to 65 ng mg⁻¹ of total protein, with a median of 2.83 (Table 2; Figure 2A). We performed the nonparametric Mann-Whitney *U*-test to analyse the differences in KLK6 expression among the four groups of ovarian tissue samples. KLK6 expression in ovarian tumour cytosols was found to be 57-fold higher than normal and 31-fold higher than benign and nonovarian metastatic tumours ($P < 0.0001$). We used the median as the cutoff value to categorise the ovarian tumours as KLK6-positive or KLK6-negative.

Relationships between KLK6 status and other clinicopathologic variables

We categorised KLK6-positive and KLK6-negative patients according to clinicopathologic variables including tumour stage, grade, histotype, debulking success and response to chemotherapy (Table 3). The strength of the relationships between KLK6 and these variables was evaluated with either the χ^2 test or the Fisher's exact test, as appropriate. We found that patients with KLK6-positive tumours more frequently had late stage (stage III/IV) disease ($P < 0.001$) (Figure 2B), higher tumour grades ($P = 0.04$), suboptimal debulking ($P = 0.002$), and serous and undifferentiated histotypes ($P < 0.001$) (Figure 2C); but KLK6 expression had no relationship with response to chemotherapy. A weak positive correlation between tissue CA125 and KLK6 expression in ovarian cancer (Spearman correlation $r_s = 0.566$; $P < 0.001$) was also observed (Figure 3).

Univariate and multivariate survival analysis

The association between KLK6 protein expression and patient survival is summarised in Table 4. Univariate Cox regression analysis showed that KLK6-positive patients were at an increased risk of relapse (HR = 1.56; $P = 0.008$) and death (HR = 1.46; $P = 0.045$) in comparison with KLK6-negative patients. When KLK6 expression was treated as a continuous variable (after logarithmic transformation of data), its correlation with patient survival remained significant (HR = 1.45 for PFS, $P < 0.001$; and 1.37 for OS, $P = 0.004$). Other variables such as histological type and grade, but not age, had even higher HRs for both PFS and OS. In multivariate Cox regression analysis, the relationship between KLK6 status and survival outcome was no longer significant. The same was true for patient age. Tumour grade remained a significant predictor of both PFS and OS, though histological type was no longer associated with OS. Kaplan–Meier survival curves showed significant association between KLK6 status and both PFS and OS (Figure 4A and B). On the contrary, Kaplan–Meier survival curves showed that CA125 did not bear prognostic significance (Figure 4C and D).

Expression of KLK6 mRNA transcripts in ovarian tumours

The collective expression of all KLK6 mRNA transcripts encoding the full-length protein was assessed in 16 ovarian tumour samples, eight with KLK6 overexpression (H1–H8) and eight with minimal KLK6 expression (L1–L8). Whereas KLK6 mRNA expression was significant in H1–H8, it was undetectable in L1–L8 (Figure 5A). For some of the high-KLK6 expressing samples, we observed an

Table 3 Relationship between tissue KLK6 status and other variables in ovarian cancer patients

Variable	No. of patients (%)			P-value
	Patients	KLK6 negative ^a	KLK6 positive	
Stage				
I	65	47 (72.3)	18 (27.7)	<0.001 ^b
II	20	9 (45.0)	11 (55.0)	
III	143	62 (43.4)	81 (56.6)	
IV	18	4 (22.2)	14 (77.8)	
χ^c	13			
Grade				
G1	58	33 (56.9)	25 (43.1)	0.04 ^b
G2	46	28 (60.9)	18 (39.1)	
G3	139	59 (42.4)	80 (57.6)	
χ^c	16			
Histotype				
Serous	110	39 (35.5)	71 (64.5)	<0.001 ^b
Endometrioid	46	30 (65.2)	16 (34.8)	
Mucinous	20	14 (70.0)	6 (30.0)	
Clear cell	18	12 (66.7)	6 (33.3)	
Undifferentiated	33	10 (30.3)	23 (69.7)	
Other nonepithelial	24	20 (83.3)	4 (16.7)	
χ^c	8			
Debulking success^d				
SD	102	38 (37.3)	64 (62.7)	0.002 ^e
OD	140	80 (57.1)	60 (42.9)	
χ^c	17			
Response to CTX^f				
NC/PD	18	8 (44.4)	10 (55.6)	0.81 ^b
PR	41	19 (46.3)	22 (53.7)	
CR	180	91 (50.6)	89 (49.4)	
NE	20			

^aCutoff = 2.83 $\mu\text{g mg}^{-1}$ (50th percentile). ^b χ^2 test. ^cStatus unknown. ^dOD: optimal debulking (0–1 cm), SD: suboptimal debulking (>1 cm). ^eFisher's exact test. ^fCTX = chemotherapy; NC = no change; PD = progressive disease; CR = complete response; PR = partial response; NE = not evaluated.

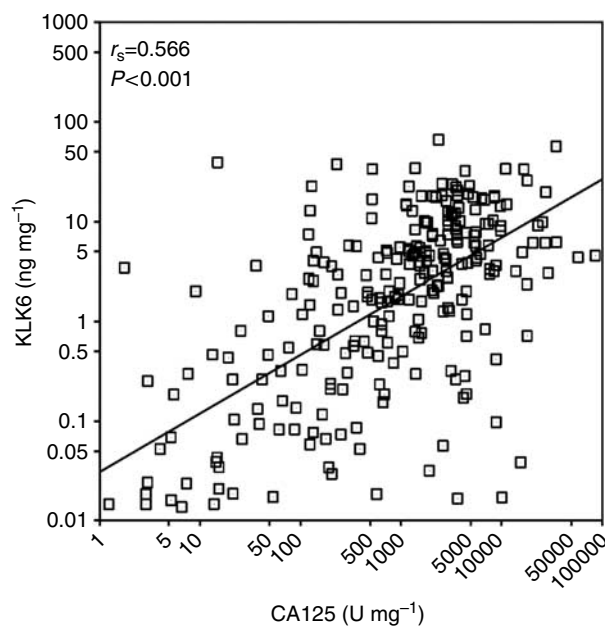


Figure 3 Correlation between tissue CA125 and KLK6 levels. r_s , Spearman's correlation coefficient.

Table 4 Univariate and multivariate analysis of tissue KLK6 with regard to PFS and OS in ovarian cancer

Variable	Progression-free survival			Overall survival		
	HR ^a	95% CI ^b	P-value	HR ^a	95% CI ^b	P-value
<i>Univariate analysis</i>						
KLK6						
Negative	1.00			1.00		
Positive	1.56	1.12–2.17	0.008	1.46	1.01–2.11	0.045
Continuous logarithmic variable	1.45	1.19–1.75	<0.001	1.37	1.11–1.71	0.004
CA125						
Negative	1.00			1.00		
Positive	1.13	0.82–1.57	0.45	1.08	0.75–1.55	0.68
Continuous logarithmic variable	1.15	0.96–1.38	0.11	1.05	0.85–1.27	0.66
Histological type ^c	1.95	1.40–2.72	<0.001	1.61	1.12–2.31	0.01
Stage (ordinal)	2.62	2.08–3.31	<0.001	2.52	1.92–3.29	<0.001
Grading (ordinal)	1.90	1.50–2.41	<0.001	1.58	1.09–2.28	0.014
Age (ordinal)	1.013	1.00–1.026	0.046	1.02	1.01–1.03	0.006
<i>Multivariate analysis</i>						
KLK6						
Negative	1.00			1.00		
Positive	1.04	0.73–1.49	0.83	1.04	0.69–1.56	0.84
Continuous logarithmic variable	1.15	0.88–1.51	0.28	1.24	0.92–1.68	0.16
CA125						
Negative	1.00			1.00		
Positive	0.94	0.66–1.34	0.74	0.92	0.62–1.37	0.68
Continuous logarithmic variable	0.87	0.66–1.15	0.34	0.75	0.54–1.03	0.08
Stage (ordinal)	2.29	1.75–2.99	<0.001	2.28	1.63–3.05	<0.001
Histological type ^c	1.15	0.81–1.65	0.43	0.99	0.66–1.47	0.96
Grading (ordinal)	1.27	0.97–1.68	0.078	1.31	0.94–1.80	0.11
Age (ordinal)	0.99	0.98–1.01	0.86	1.01	0.99–1.027	0.26

^aHazard ratio (HR) estimated from Cox proportional hazard regression model. ^bConfidence interval of the estimated HR. ^cSerous vs others.

additional, shorter, and much weaker band generated by PCR amplification. After sequencing, we confirmed this band to represent a previously identified splice variant (GenBank accession no. AY279383), which lacks exon 4 (Kurlender *et al*, 2005). Four benign and one normal ovarian tissue samples expressing low KLK6 were used as controls. All had undetectable *KLK6* mRNA expression (Figure 5A).

We also examined the relative expression of two most abundant *KLK6* mRNA transcripts. For each of tumour samples H1–H8, we assessed the differential expression of the 'classical transcript' and 'alternative transcript 1'. Normal brain and ovarian cDNA templates were used as controls. For all samples studied, excluding normal ovarian tissues which showed no expression for either transcript, 'alternative transcript 1' was by far the dominant transcript (GenBank accession no. AY317768) (Figure 5B).

SNPs in the 5'-UTR of *KLK6* 'alternative transcript 1'

As 'alternative transcript 1' was found to be the more abundant transcript (Figure 5B), we used it as the template for our mutation screening experiments. We amplified and sequenced all *KLK6* exons and the 5'-flanking region. No mutations were found in any of the coding exons of *KLK6*. However, we identified two previously unpublished single nucleotide polymorphisms (SNPs) located in a (GT)₄ microsatellite in the 5'-untranslated region (exon 2A). The SNPs are located at 55 and 60 bp downstream of the putative transcription start site (Pampalakis *et al*, 2004), and 195 and 190 bp upstream of the start codon, respectively. G was the more frequent allele for both SNPs. The two SNPs were in linkage disequilibrium (the dependence of an allele at one locus on alleles at another locus), as the T allele was found at the second SNP only if the T allele was also present at the first SNP. We observed six different haplotypes across all samples studied. None of the haplotypes significantly correlated with *KLK6* expression or sample type.

According to the published GenBank sequence AY318876, the microsatellite in this region consists of four GT repeats (GT)₄. However, according to our findings, the most prevalent haplotype (51%) has a (GT)₃ microsatellite owing to a single nucleotide change from T to G at basepair 55. As all tumour samples were collected from Italian subjects, we examined if the difference in the microsatellite length was due to race. We sequenced three normal ovarian tissues obtained from Mount Sinai Hospital, Ontario, Canada, and found them to also have Haplotype B.

Hormonal regulation of *KLK6* in ovarian cancer

We examined the effects of steroid hormones on *KLK6* expression in BG-1, CaOV3 and OVCAR-3 epithelial ovarian cancer cell lines, as well as the hOSE cell line. As illustrated in Figure 6, none of the steroid hormones produced any significant changes in *KLK6* expression for the ovarian cancer cell lines. The hOSE cell line did not produce detectable *KLK6* under any treatment conditions (data not shown).

DISCUSSION

Ovarian cancer is the most lethal gynaecologic malignancy in developed countries (Mor *et al*, 2005). The high mortality rate of this disease could be attributed to difficulties underlying its early detection, the disease's intrinsic aggressiveness, and our meagre understanding of its aetiology. The development of novel diagnostic and prognostic biomarkers will facilitate early detection and more individualised and efficient treatment plans for ovarian cancer patients. Of the plethora of novel potential biomarkers identified in recent years, those that also have clinical relevance to cancer initiation and progression are the most valuable, as they may serve the dual role as biomarkers as well as therapeutic targets.

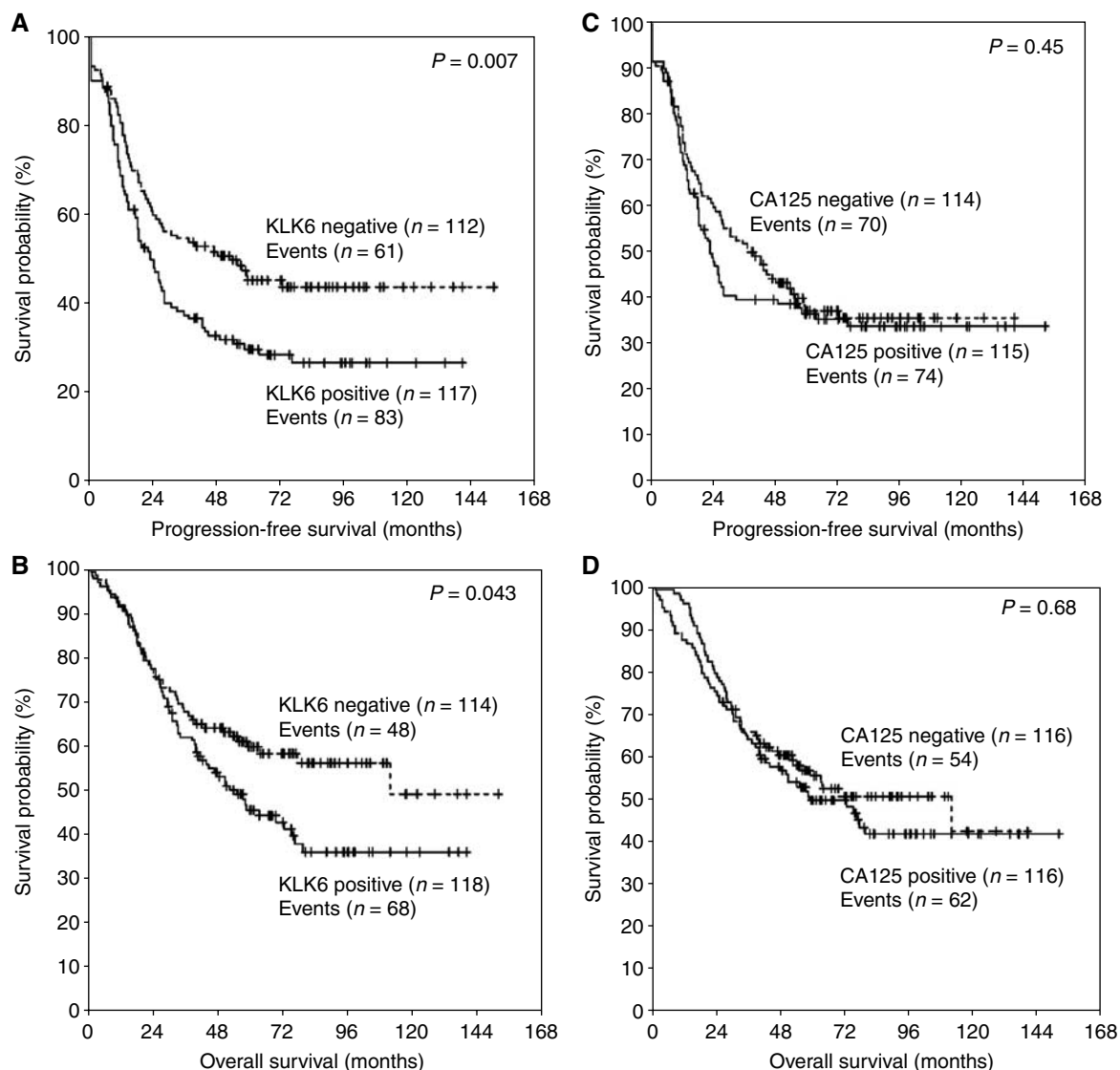


Figure 4 Kaplan–Meier survival curves for progression-free survival (**A**) and overall survival (**B**) in patients with KLK6-positive and KLK6-negative ovarian tumours. *n*, number of samples. Kaplan–Meier survival curves for progression-free survival (**C**) and overall survival (**D**) in patients with CA125-positive and CA125-negative ovarian tumours. *n*, number of samples.

Serine proteases are among these newly identified tumour-associated biomarkers (Duffy, 1996). Accumulating evidence suggests that the human tissue kallikreins, a family of secreted serine proteases ubiquitously expressed in human tissues and biological fluids, have prognostic and diagnostic value in various cancer types (Borgono and Diamandis, 2004). Some KLKs have also been shown to play a role in extracellular matrix degradation, which in turn facilitates tumour invasion and metastasis (Borgono *et al*, 2004). Human kallikrein 6, in particular, is elevated in presurgical serum of ovarian cancer patients (Diamandis *et al*, 2003), as well as overexpressed in ovarian tumour tissues (Hoffman *et al*, 2002), and bears prognostic and diagnostic significance. KLK6 is a trypsin-like enzyme that can degrade *in vitro* laminin and fibronectin (Bernett *et al*, 2002), as well as other basic constituents of the extracellular matrix (ECM) and the basement membrane (Magklara *et al*, 2003), and could be linked to tumour cell growth and malignant transformation. Hence, KLK6 may also serve as a therapeutic target for ovarian cancer. To further clarify KLK6's clinical utility and its role in ovarian cancer pathophysiology, we aimed to delineate the molecular processes underlying KLK6 overexpression in ovarian cancer.

We first conducted a validation study to confirm the prognostic significance of KLK6 in a large group of ovarian tumour tissues using a new immunoassay of higher sensitivity and specificity than previously reported (Diamandis *et al*, 2000). KLK6 protein was expressed at low levels in normal and benign ovarian tissues. Conversely, the KLK6 expression in ovarian tumour cytosols was significantly upregulated. This increase correlated with cancer stage (Figure 2B). Metastatic tumours to the ovary from primary gastrointestinal, endometrial, uterine, or breast cancers expressed low levels of KLK6 that were comparable with benign ovarian tissues. Hence, the up-regulation of KLK6 seems to be specific to ovarian cancer. Figure 2C indicates that most tumours with KLK6 up-regulation were of epithelial origin, and especially of serous and undifferentiated histotypes.

Univariate Cox regression analyses confirmed that KLK6 was significantly correlated with survival (Table 4). Kaplan–Meier survival curves confirmed that KLK6 was a significant and much stronger prognostic biomarker than CA125 for both PFS and OS (Figure 4). In multivariate Cox regression models adjusted for tumour grade, histotype, CA125 and patient age, the relationship between KLK6 expression and patient survival was no longer

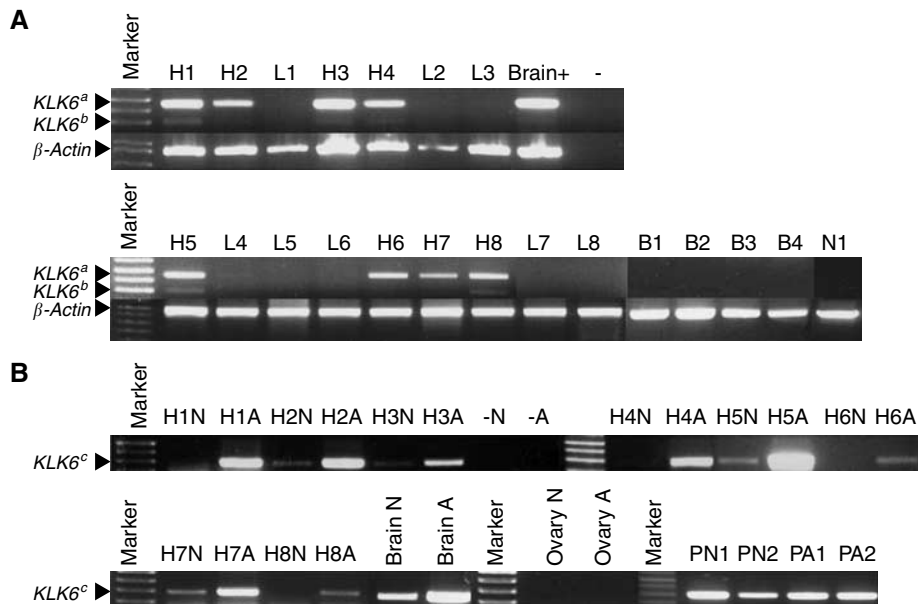


Figure 5 (A) *KLK6* mRNA expression in ovarian tumours with high *KLK6* protein (H1–H8) and low *KLK6* protein (L1–L8), four benign ovarian samples (B1–B4), one normal ovarian sample (N1), and one normal brain sample. *KLK6^a*: all *KLK6* full-length mRNA transcripts. *KLK6^b*: *KLK6* splice variant missing exon 4 (GenBank accession no. AY279383). β -Actin was used as control for the quality of cDNA. Note the expression of mRNA only in tumours with high *KLK6* protein. (B) Differential expression patterns of *KLK6* 'classical transcript' and 'alternative transcript 1' in eight high *KLK6* protein expressing tumours (H1–H8). N: amplification using primers for the 'classical transcript'; A: amplification using primers for the 'alternative transcript 1'. *KLK6^c* denotes both 'A' and 'N' amplicons, which are 285 and 290 bp, respectively. Brain and ovarian normal cDNA were used as controls. Note predominance of 'alternative transcript 1' expression in all cases, as well as in the brain tissue (control). PN1, PN2 were two samples of plasmid DNA containing 'N' amplicon as insert, reamplified using 'N' primers. PA1, PA2 were two samples of plasmid DNA containing 'A' amplicon as insert, reamplified using 'A' primers. Note that when starting material was the same, the two sets of primers generated PCR bands of similar intensity.

significant. Even though *KLK6* may not be a strong independent prognostic indicator for ovarian cancer, it appears to be a surrogate marker for other clinicopathological variables such as tumour stage, grade, histotype and debulking success. Recent evidence indicates that multiparametric strategies that merge diagnostic and prognostic information provided by several individual biomarkers yield more informative and accurate medical predictions (Woolas *et al*, 1993, 1995; Zhang *et al*, 1999; Mor *et al*, 2005). Therefore, *KLK6* could be used in conjunction with other kallikreins, as well as non-kallikrein biomarkers in future multiparametric prognostic tests for ovarian cancer.

To delineate the processes underlying the overexpression of *KLK6* in ovarian cancer, we first determined whether *KLK6* was under transcriptional or translational upregulation. We assessed *KLK6* mRNA expression in tumours with high or low *KLK6* protein concentration and correlated these two parameters. Excellent concordance between *KLK6* protein and mRNA expression was observed (Figure 5), rendering evidence for transcriptional regulation.

We evaluated the differential expression of the two most abundant transcripts of *KLK6*. Previous studies showed that 'alternative transcript 1' was expressed in both peripheral tissues (though the ovary was not examined) and the central nervous system, whereas the 'classical transcript' was only expressed in the central nervous system (Christophi *et al*, 2004; Pampalakis *et al*, 2004). We confirmed that the 'classical transcript' was highly expressed only in the brain, and weakly expressed or absent in all ovarian tissues. *KLK6* 'alternative transcript 1' was the dominant transcript in all samples examined (Figure 5). Therefore, differential expression of alternative transcripts cannot account for *KLK6* upregulation in ovarian cancer.

Our genomic mutation screening experiments found no mutations except two novel exonic SNPs within a (GT)₄ microsatellite in the 5'-UTR of 'alternative transcript 1' (+55 G/T, +60 G/T). The SNPs were not located in any putative promoter

region or known steroid hormone response elements regulatory regions (Christophi *et al*, 2004). No consensual changes were observed within any sample types. Previous experiments have indicated a tendency for SNPs in the *KLK* locus to exhibit strong linkage disequilibrium (Cramer *et al*, 2003; Borgono and Diamandis, 2004). Indeed, these two SNPs were linked to each other.

Lastly, we evaluated the role of steroid hormones in the regulation of *KLK6* in ovarian cancer. Sex steroid hormones have previously been implicated in the pathogenesis and growth regulation of ovarian cancers (Hoover *et al*, 1977; Langdon *et al*, 1990; Godwin *et al*, 1993; Chien *et al*, 1994). Hormonal regulation of *KLKs* in ovarian cancer has only been demonstrated in the ovarian cancer cell line, BG-1, where *KLK9* was under the regulation of oestrogen and progesterone (Yousef *et al*, 2001). In this study, we found that steroid hormones play a minor role in the regulation of *KLK6* in ovarian cancer. It remains to be elucidated why steroid hormones regulate *KLK6* in breast cancer cell lines such as BT474 (Yousef *et al*, 1999), but not in receptor-positive ovarian cancer cell lines.

In conclusion, we confirmed that *KLK6* is significantly upregulated in ovarian cancer and serves as an unfavourable prognostic biomarker. We also found that *KLK6* is under transcriptional regulation. Nevertheless, the overexpression of *KLK6* in ovarian cancer is probably not due to differential expression of alternative transcripts, mutations in the exons and proximal 5'-flanking region, or steroid hormone regulation.

Various other transcriptional regulation mechanisms remain to be tested for their roles in the upregulation of the *KLKs* in ovarian cancer. As subgroups of kallikreins are frequently coexpressed in tissues, transcription of *KLK* genes may be regulated by *cis*-acting locus control regions (Li *et al*, 1999). In fact, such a mechanism has been implicated in controlling the salivary gland-specific expression of the rat kallikrein gene family (Smith *et al*, 1992). Future studies should investigate whether a similar mechanism is at work

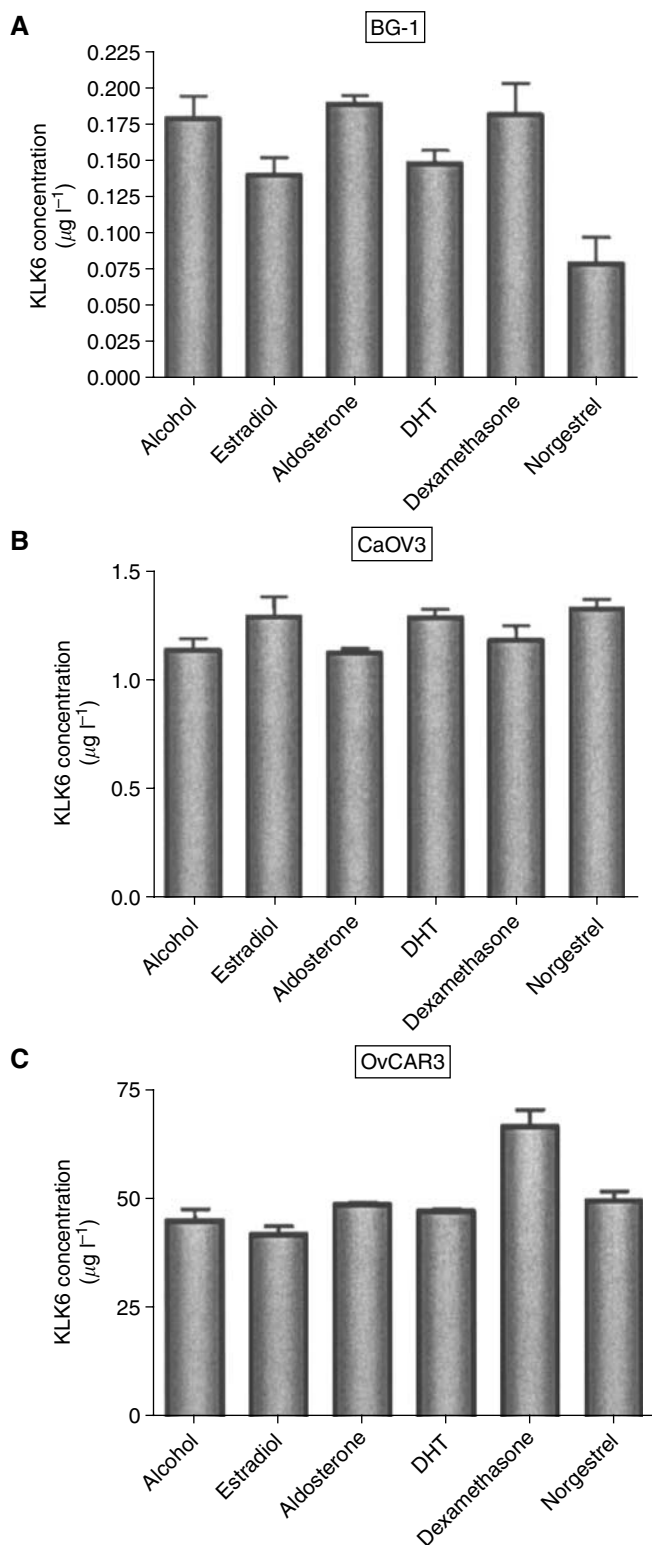


Figure 6 Ovarian cancer cell lines BG-1, CaOV3, OvCAR3 were stimulated with 10^{-8} M of estradiol, aldosterone, DHT, dexamethasone, norgestrel, or alcohol (control). KLK6 protein concentration in supernatants was quantified by immunoassay. No major changes were seen with any steroid hormone stimulation. Error bars represent standard errors of the mean.

in human ovaries. Furthermore, the promoter region of 'alternative transcript 1' has not been fully elucidated, and the actual transcription start site is not ascertained. Characterisation of the *KLK6* promoter would facilitate future efforts to study the regulation of *KLK6*, including studying the roles of transcription factors. Lastly, chromosome 19q13 is reportedly rearranged in numerous types of solid tumours (Whang-Peng *et al*, 1984; Tanaka *et al*, 1989; Bello and Rey, 1990; Pejovic *et al*, 1991, 1992; Jenkins *et al*, 1993). Potential gene amplification of *KLK6* in ovarian cancer has also been suggested (Ni *et al*, 2004). Therefore, the role of chromosomal rearrangements of the *KLK* locus in cancer should be examined in future investigations.

REFERENCES

- Becker C, Noldus J, Diamandis E, Lilja H (2004) The role of molecular forms of prostate-specific antigen (PSA or hK3) and of human glandular kallikrein 2 (hK2) in the diagnosis and monitoring of prostate cancer and in extra-prostatic disease. *Crit Rev Clin Lab Sci* 38: 357–399
- Bello MJ, Rey JA (1990) Chromosome aberrations in metastatic ovarian cancer: relationship with abnormalities in primary tumors. *Int J Cancer* 45: 50–54
- Bennett MJ, Blaber SI, Scarisbrick IA, Dhanarajan P, Thompson SM, Blaber M (2002) Crystal structure and biochemical characterization of human kallikrein 6 reveals that a trypsin-like kallikrein is expressed in the central nervous system. *J Biol Chem* 277: 24562–24570
- Bharaj BB, Luo LY, Jung K, Stephan C, Diamandis EP (2002) Identification of single nucleotide polymorphisms in the human kallikrein 10 (*KLK10*) gene and their association with prostate, breast, testicular, and ovarian cancers. *Prostate* 51: 35–41
- Borgono CA, Diamandis EP (2004) The emerging roles of human tissue kallikreins in cancer. *Nat Rev Cancer* 4: 876–890
- Borgono CA, Grass L, Soosaipillai A, Yousef GM, Petraki CD, Howarth DH, Fracchioli S, Katsaros D, Diamandis EP (2003) Human kallikrein 14: a new potential biomarker for ovarian and breast cancer. *Cancer Res* 63: 9032–9041
- Borgono CA, Michael IP, Diamandis EP (2004) Human tissue kallikreins: physiologic roles and applications in cancer. *Mol Cancer Res* 2: 257–280
- Chien CH, Wang FF, Hamilton TC (1994) Transcriptional activation of *c-myc* proto-oncogene by estrogen in human ovarian cancer cells. *Mol Cell Endocrinol* 99: 11–19
- Christophi GP, Isackson PJ, Blaber S, Blaber M, Rodriguez M, Scarisbrick IA (2004) Distinct promoters regulate tissue-specific and differential expression of kallikrein 6 in CNS demyelinating disease. *J Neurochem* 91: 1439–1449
- Christopoulos TK, Diamandis EP (1992) Enzymatically amplified time-resolved fluorescence immunoassay with terbium chelates. *Anal Chem* 64: 342–346
- Cox DR (1972) Regression models and life tables. *J R Stat Soc B* 34: 181–220
- Cramer SD, Chang BL, Rao A, Hawkins GA, Zheng SL, Wade WN, Cooke RT, Thomas LN, Bleecker ER, Catalona WJ, Sterling DA, Meyers DA, Ohar J, Xu J (2003) Association between genetic polymorphisms in the prostate-specific antigen gene promoter and serum prostate-specific antigen levels. *J Natl Cancer Inst* 95: 1044–1053
- Day Jr TG, Gallager HS, Rutledge FN (1975) Epithelial carcinoma of the ovary: prognostic importance of histologic grade. *Natl Cancer Inst Monogr* 42: 15–21
- Diamandis EP, Okui A, Mitsui S, Luo LY, Soosaipillai A, Grass L, Nakamura T, Howarth DJ, Yamaguchi N (2002) Human kallikrein 11: a new biomarker of prostate and ovarian carcinoma. *Cancer Res* 62: 295–300
- Diamandis EP, Scorilas A, Fracchioli S, Van Gramberen M, De Bruijn H, Henrik A, Soosaipillai A, Grass L, Yousef GM, Stenman UH, Massobrio M, Van Der Zee AG, Vergote I, Katsaros D (2003) Human kallikrein 6 (hK6): a new potential serum biomarker for diagnosis and prognosis of ovarian carcinoma. *J Clin Oncol* 21: 1035–1043
- Diamandis EP, Yousef GM, Soosaipillai AR, Grass L, Porter A, Little S, Sotiropoulou G (2000) Immunofluorometric assay of human kallikrein 6 (zyme/protease M/neurosin) and preliminary clinical applications. *Clin Biochem* 33: 369–375
- Dong Y, Kaushal A, Brattsand M, Nicklin J, Clements JA (2003) Differential splicing of *KLK5* and *KLK7* in epithelial ovarian cancer produces novel

- variants with potential as cancer biomarkers. *Clin Cancer Res* 9: 1710–1720
- Dong Y, Kaushal A, Bui L, Chu S, Fuller PJ, Nicklin J, Samaratunga H, Clements JA (2001) Human kallikrein 4 (KLK4) is highly expressed in serous ovarian carcinomas. *Clin Cancer Res* 7: 2363–2371
- Duffy MJ (1996) Proteases as prognostic markers in cancer. *Clin Cancer Res* 2: 613–618
- Godwin AK, Testa JR, Hamilton TC (1993) The biology of ovarian cancer development. *Cancer* 71: 530–536
- Hoffman BR, Katsaros D, Scorilas A, Diamandis P, Fracchioli S, Rigault de la Longrais IA, Colgan T, Puopolo M, Giardina G, Massobrio M, Diamandis EP (2002) Immunofluorometric quantitation and histochemical localisation of kallikrein 6 protein in ovarian cancer tissue: a new independent unfavourable prognostic biomarker. *Br J Cancer* 87: 763–771
- Hoover R, Gray Sr LA, Fraumeni Jr JF (1977) Stilboestrol (diethylstilbestrol) and the risk of ovarian cancer. *Lancet* 2: 533–534
- Jenkins RB, Bartelt Jr D, Stalboerger P, Persons D, Dahl RJ, Podratz K, Keeney G, Hartmann L (1993) Cytogenetic studies of epithelial ovarian carcinoma. *Cancer Genet Cytogenet* 71: 76–86
- Kaplan EL, Meier P (1958) Non parametric estimation from incomplete observations. *J Am Stat Assoc* 53: 457–481
- Kishi T, Grass L, Soosaipillai A, Scorilas A, Harbeck N, Schmalfeldt B, Dorn J, Mysliwiec M, Schmitt M, Diamandis EP (2003) Human kallikrein 8, a novel biomarker for ovarian carcinoma. *Cancer Res* 63: 2771–2774
- Kruk PA, Auersperg N (1992) Human ovarian surface epithelial cells are capable of physically restructuring extracellular matrix. *Am J Obstet Gynecol* 167: 1437–1443
- Kurlender L, Borgono C, Michael IP, Obiezu C, Elliott MB, Yousef GM, Diamandis EP (2005) A survey of alternative transcripts of human tissue kallikrein genes. *Biochim Biophys Acta* 1755: 1–14
- Landry JR, Mager DL, Wilhelm BT (2003) Complex controls: the role of alternative promoters in mammalian genomes. *Trends Genet* 19: 640–648
- Langdon SP, Hawkes MM, Lawrie SS, Hawkins RA, Tesdale AL, Crew AJ, Miller WR, Smyth JF (1990) Oestrogen receptor expression and the effects of oestrogen and tamoxifen on the growth of human ovarian carcinoma cell lines. *Br J Cancer* 62: 213–216
- Li Q, Harju S, Peterson KR (1999) Locus control regions: coming of age at a decade plus. *Trends Genet* 15: 403–408
- Liu XL, Wazer DE, Watanabe K, Band V (1996) Identification of a novel serine protease-like gene, the expression of which is down-regulated during breast cancer progression. *Cancer Res* 56: 3371–3379
- Luo LY, Katsaros D, Scorilas A, Fracchioli S, Bellino R, Van Gramberen M, De Bruijn H, Henrik A, Stenman UH, Massobrio M, Van Der Zee AG, Vergote I, Diamandis EP (2003) The serum concentration of human kallikrein 10 represents a novel biomarker for ovarian cancer diagnosis and prognosis. *Cancer Res* 63: 807–811
- Magklara A, Mellati AA, Wasney GA, Little SP, Sotiropoulou G, Becker GW, Diamandis EP (2003) Characterization of the enzymatic activity of human kallikrein 6: Autoactivation, substrate specificity, and regulation by inhibitors. *Biochem Biophys Res Commun* 307: 948–955
- Magklara A, Scorilas A, Katsaros D, Massobrio M, Yousef GM, Fracchioli S, Danese S, Diamandis EP (2001) The human KLK8 (neuropsin/ovasin) gene: identification of two novel splice variants and its prognostic value in ovarian cancer. *Clin Cancer Res* 7: 806–811
- Majumdar S, Diamandis EP (1999) The promoter and the enhancer region of the KLK 3 (prostate specific antigen) gene is frequently mutated in breast tumours and in breast carcinoma cell lines. *Br J Cancer* 79: 1594–1602
- Mantel N (1966) Evaluation of survival data and two new rank order statistics arising in its consideration. *Cancer Chemother Rep* 50: 163–170
- Mor G, Visintin I, Lai Y, Zhao H, Schwartz P, Rutherford T, Yue L, Bray-Ward P, Ward DC (2005) Serum protein markers for early detection of ovarian cancer. *Proc Natl Acad Sci USA* 102: 7677–7682
- Nelson PS, Gan L, Ferguson C, Moss P, Gelinis R, Hood L, Wang K (1999) Molecular cloning and characterization of prostatic, an androgen-regulated serine protease with prostate-restricted expression. *Proc Natl Acad Sci USA* 96: 3114–3119
- Ni X, Zhang W, Huang KC, Wang Y, Ng SK, Mok SC, Berkowitz RS, Ng SW (2004) Characterisation of human kallikrein 6/protease M expression in ovarian cancer. *Br J Cancer* 91: 725–731
- Pampalakis G, Kurlender L, Diamandis EP, Sotiropoulou G (2004) Cloning and characterization of novel isoforms of the human kallikrein 6 gene. *Biochem Biophys Res Commun* 320: 54–61
- Pejovic T, Heim S, Mandahl N, Baldetorp B, Elmfors B, Floderus UM, Furgyk S, Helm G, Himmelmann A, Willen H (1992) Chromosome aberrations in 35 primary ovarian carcinomas. *Genes Chromosomes Cancer* 4: 58–68
- Pejovic T, Heim S, Mandahl N, Elmfors B, Furgyk S, Floderus UM, Helm G, Willen H, Mitelman F (1991) Bilateral ovarian carcinoma: cytogenetic evidence of unicentric origin. *Int J Cancer* 47: 358–361
- Petraki CD, Karavana VN, Skoufogiannis PT, Little SP, Howarth DJ, Yousef GM, Diamandis EP (2001) The spectrum of human kallikrein 6 (zyme/protease M/neurosin) expression in human tissues as assessed by immunohistochemistry. *J Histochem Cytochem* 49: 1431–1441
- Pettersson F (1994) *Annual Report on the Treatment in Gynecological Cancer*. Stockholm: International Federation of Gynecology and Obstetrics
- Riegman PH, Vlietstra RJ, van der Korput JA, Brinkmann AO, Trapman J (1991) The promoter of the prostate-specific antigen gene contains a functional androgen responsive element. *Mol Endocrinol* 5: 1921–1930
- Scorilas A, Borgono CA, Harbeck N, Dorn J, Schmalfeldt B, Schmitt M, Diamandis EP (2004) Human kallikrein 13 protein in ovarian cancer cytosols: a new favorable prognostic marker. *J Clin Oncol* 22: 678–685
- Serov SF, Scully RE, Sorbin LH (1973) *Histological Typing of Ovarian Tumors*. Geneva: World Health Organization
- Smith MS, Lechago J, Wines DR, MacDonald RJ, Hammer RE (1992) Tissue-specific expression of kallikrein family transgenes in mice and rats. *DNA Cell Biol* 11: 345–358
- Tanaka K, Boice CR, Testa JR (1989) Chromosome aberrations in nine patients with ovarian cancer. *Cancer Genet Cytogenet* 43: 1–14
- Tsuyuki D, Grass L, Diamandis EP (1997) Frequent detection of mutations in the 5' flanking region of the prostate-specific antigen gene in female breast cancer. *Eur J Cancer* 33: 1851–1854
- Whang-Peng J, Knutsen T, Douglass EC, Chu E, Ozols RF, Hogan WM, Young RC (1984) Cytogenetic studies in ovarian cancer. *Cancer Genet Cytogenet* 11: 91–106
- Woolas RP, Conaway MR, Xu F, Jacobs JJ, Yu Y, Daly L, Davies AP, O'Brian K, Berchuck A, Soper JT (1995) Combinations of multiple serum markers are superior to individual assays for discriminating malignant from benign pelvic masses. *Gynecol Oncol* 59: 111–116
- Woolas RP, Xu F, Jacobs JJ, Yu YH, Daly L, Berchuck A, Soper JT, Clarke-Pearson DL, Oram DH, Bast Jr RC (1993) Elevation of multiple serum markers in patients with stage I ovarian cancer. *J Natl Cancer Inst* 85: 1748–1751
- Xue W, Irvine RA, Yu MC, Ross RK, Coetzee GA, Ingles SA (2000) Susceptibility to prostate cancer: interaction between genotypes at the androgen receptor and prostate-specific antigen loci. *Cancer Res* 60: 839–841
- Yousef GM, Diamandis EP (1999) The new kallikrein-like gene, KLK-L2. Molecular characterization, mapping, tissue expression, and hormonal regulation. *J Biol Chem* 274: 37511–37516
- Yousef GM, Diamandis EP (2001) The new human tissue kallikrein gene family: structure, function, and association to disease. *Endocr Rev* 22: 184–204
- Yousef GM, Kyriakopoulou LG, Scorilas A, Fracchioli S, Ghiringhello B, Zarghooni M, Chang A, Diamandis M, Giardina G, Hartwick WJ, Richiardi G, Massobrio M, Diamandis EP, Katsaros D (2001) Quantitative expression of the human kallikrein gene 9 (KLK9) in ovarian cancer: a new independent and favorable prognostic marker. *Cancer Res* 61: 7811–7818
- Yousef GM, Luo LY, Scherer SW, Sotiropoulou G, Diamandis EP (1999) Molecular characterization of zyme/protease M/neurosin (PRSS9), a hormonally regulated kallikrein-like serine protease. *Genomics* 62: 251–259
- Yousef GM, Polymeris ME, Yacoub GM, Scorilas A, Soosaipillai A, Popalis C, Fracchioli S, Katsaros D, Diamandis EP (2003a) Parallel over-expression of seven kallikrein genes in ovarian cancer. *Cancer Res* 63: 2223–2227
- Yousef GM, Scorilas A, Katsaros D, Fracchioli S, Iskander L, Borgono C, Rigault de la Longrais IA, Puopolo M, Massobrio M, Diamandis EP (2003b) Prognostic value of the human kallikrein gene 15 expression in ovarian cancer. *J Clin Oncol* 21: 3119–3126
- Zhang Z, Barnhill SD, Zhang H, Xu F, Yu Y, Jacobs I, Woolas RP, Berchuck A, Madyastha KR, Bast Jr RC (1999) Combination of multiple serum markers using an artificial neural network to improve specificity in discriminating malignant from benign pelvic masses. *Gynecol Oncol* 73: 56–61