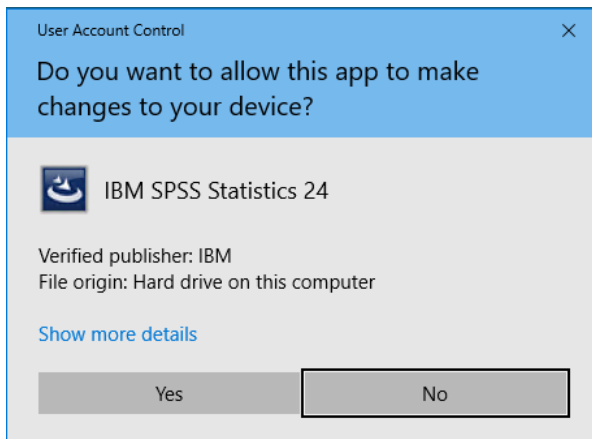
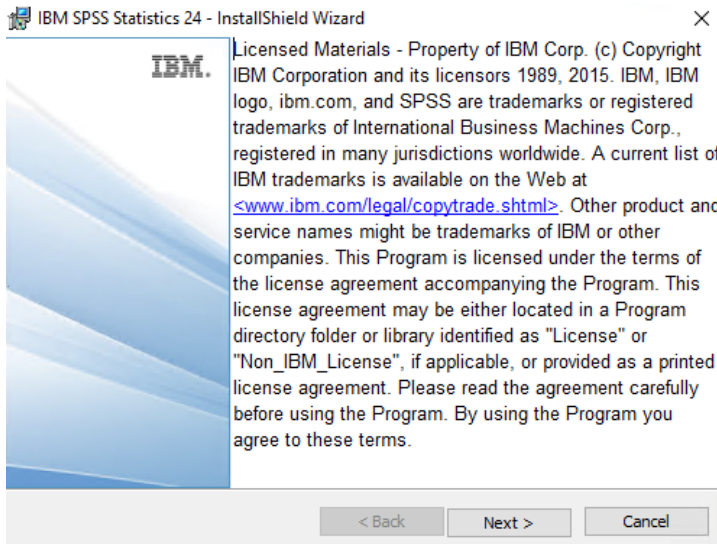


## IBM SPSS Statistics for Windows Installation

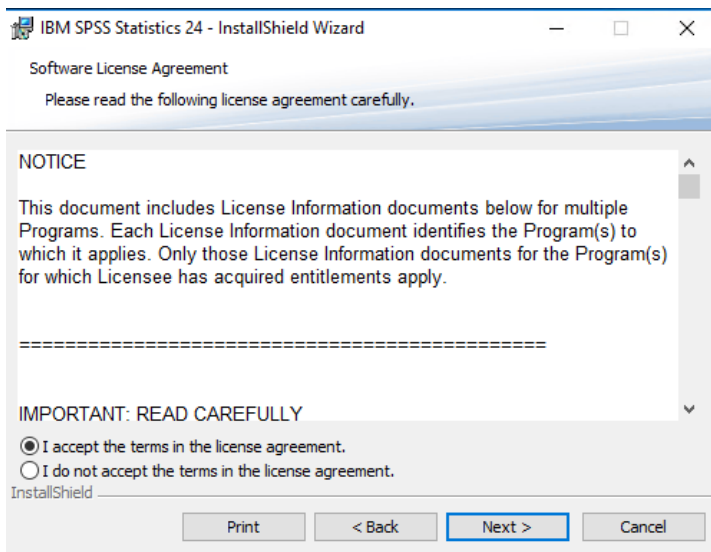
1. Determine whether your system 32-bit or 64-bit. If you are not sure, please check here: <http://support.microsoft.com/kb/827218>.
2. Ensure that your computer is **connected to the Internet**.
3. If you have purchased a CD, insert it into your disk drive. If you have purchased online, download the appropriate file (Windows 32 or 64 bit) to your computer's local hard drive.
4. After download, double-click the installer to launch it. The CD should launch the installer automatically.
5. A warning message will appear asking if you would like to allow this app to make changes to your device. Click **Yes**.



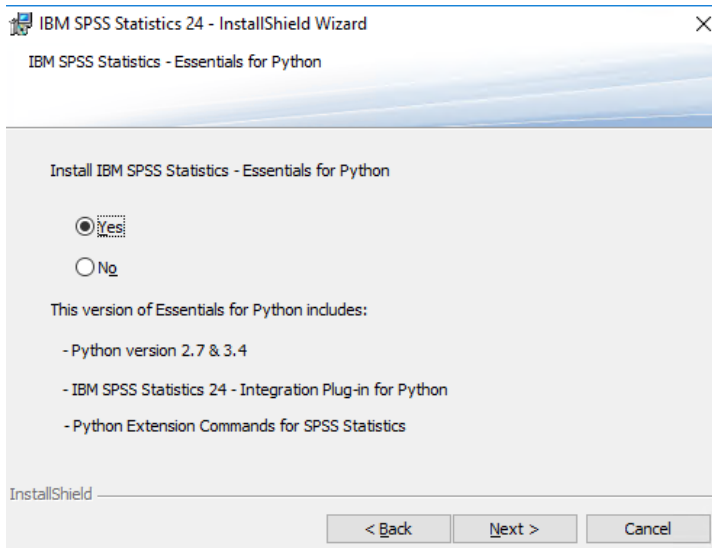
6. On the "Welcome to IBM SPSS Statistics" window, click **Next**.



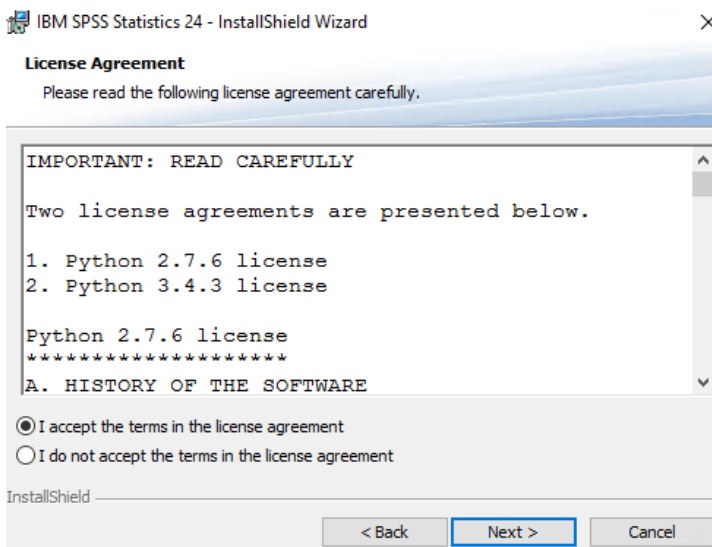
7. **Read and Accept the terms in the license agreement** and click **Next**.



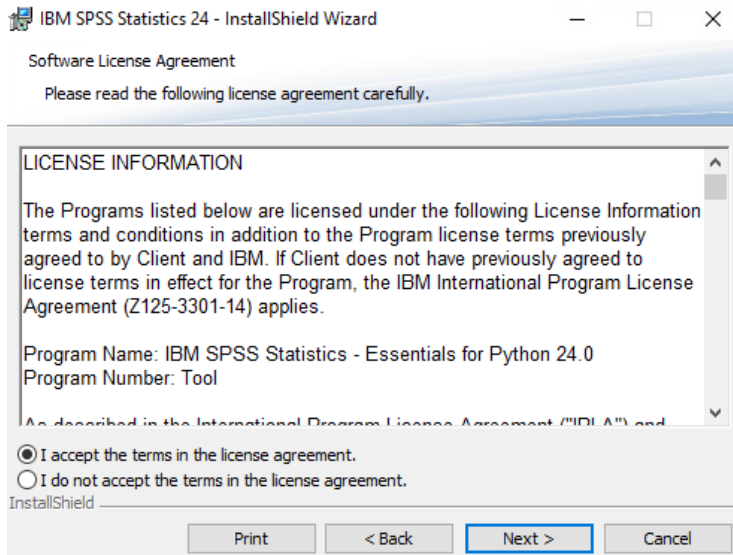
8. When asked to install IBM SPSS Statistics – Essentials for Python, select **Yes** and click **Next**.



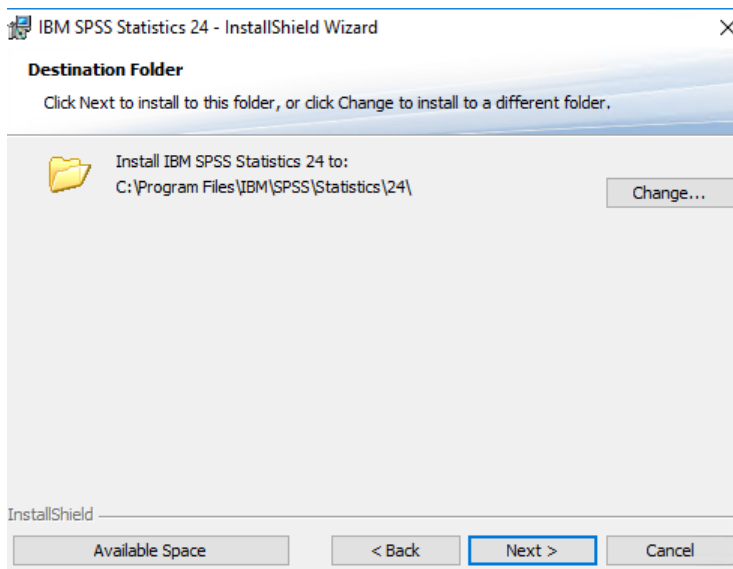
9. Read and **Accept the terms in the license agreement** and click **Next**.



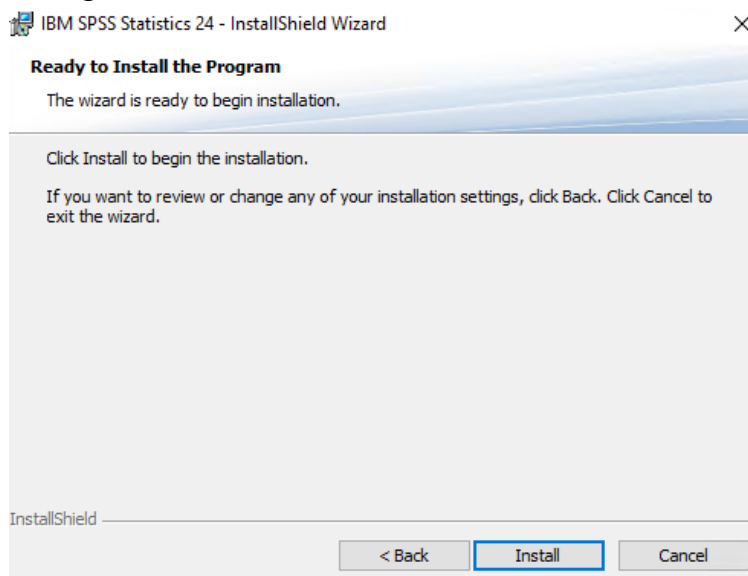
10. Read and **Accept the terms in the license agreement** and click **Next**.



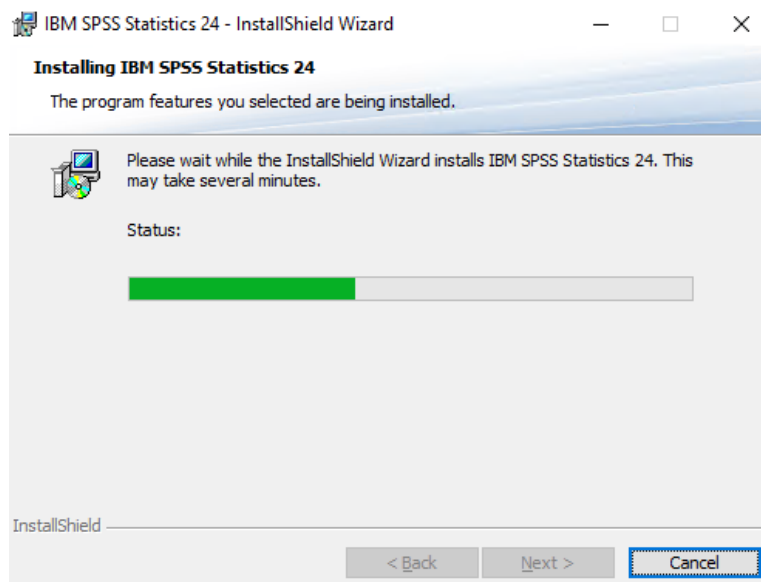
11. If you want to install IBM SPSS Statistics to a different location other than the default then choose the location. Otherwise **leave the default** and click **Next**.



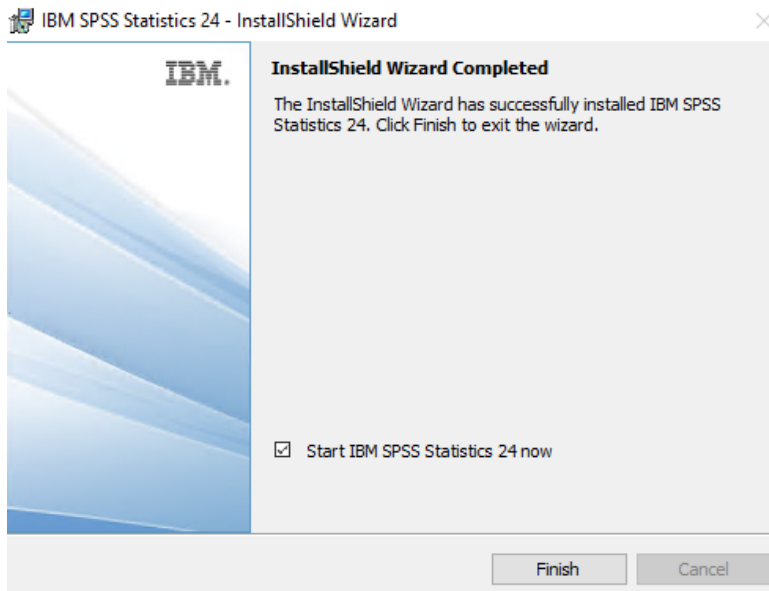
12. To begin installation click **Install**.



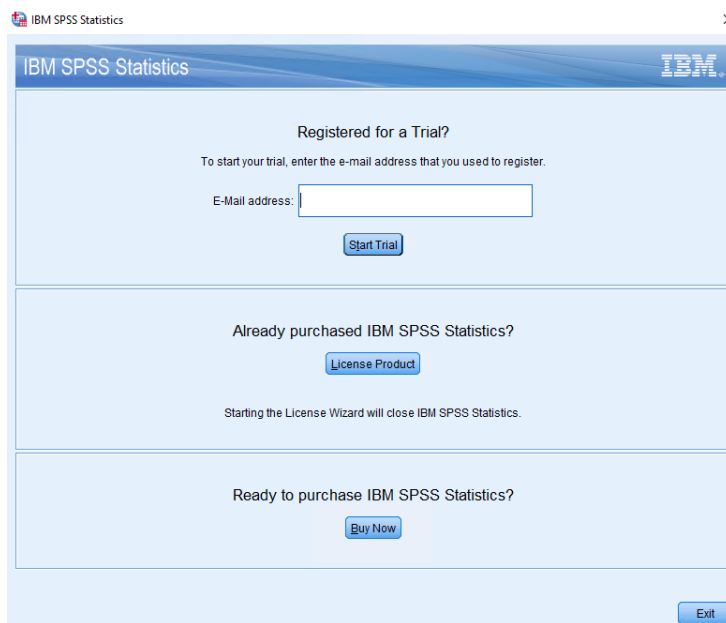
13. Wait for SPSS to complete installation. This process will take between 1 to 10 minutes depending on the speed of your workstation and whether the installation is being performed from DVD or digital download.



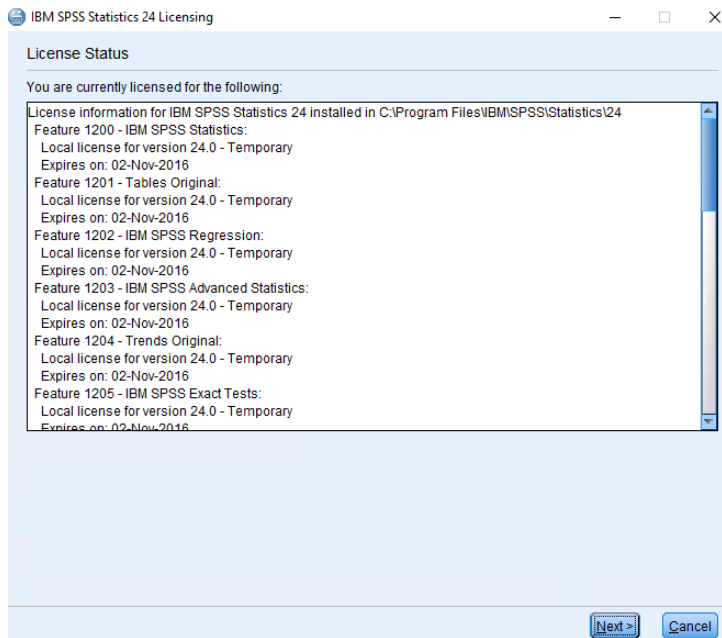
14. To start IBMS SPSS Statistics and activate the license leave **Start IBM SPSS Statistics 24 now** checked and click **Finish**.



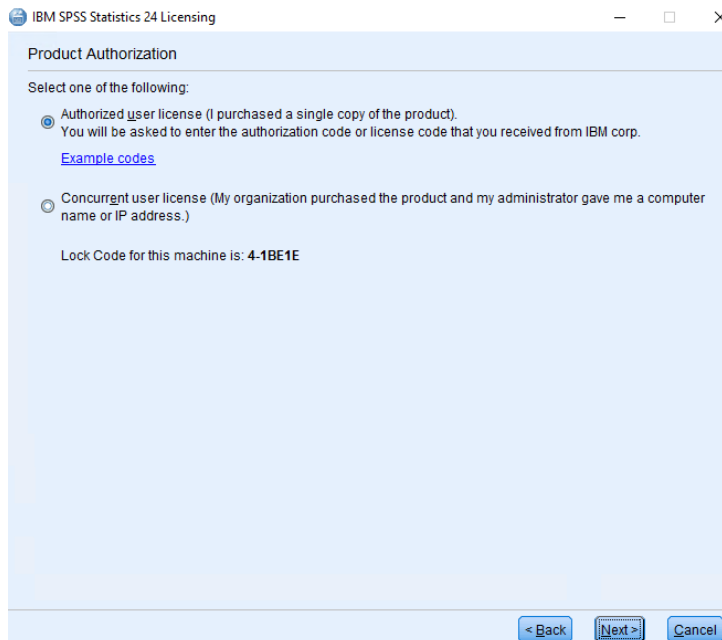
15. The program will now launch the activation window. Select **License Product** under Already purchased IBM SPSS Statistics?



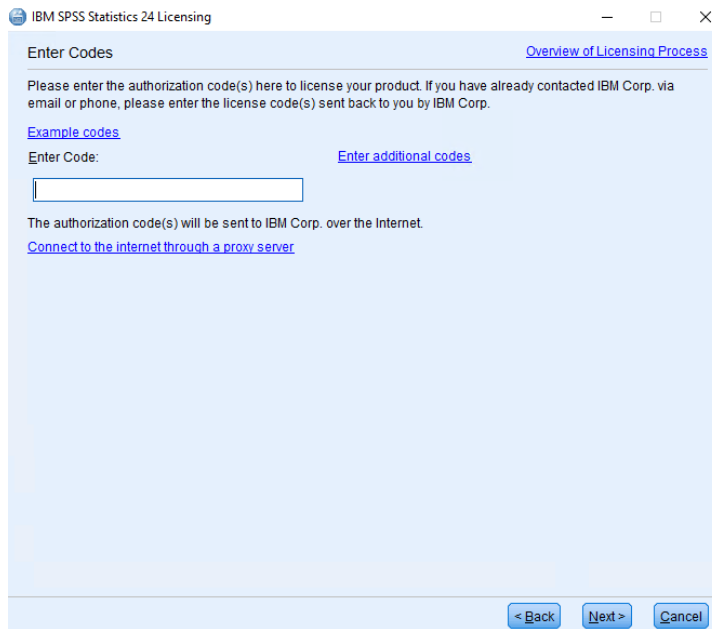
16. On the License Status window click **Next**.



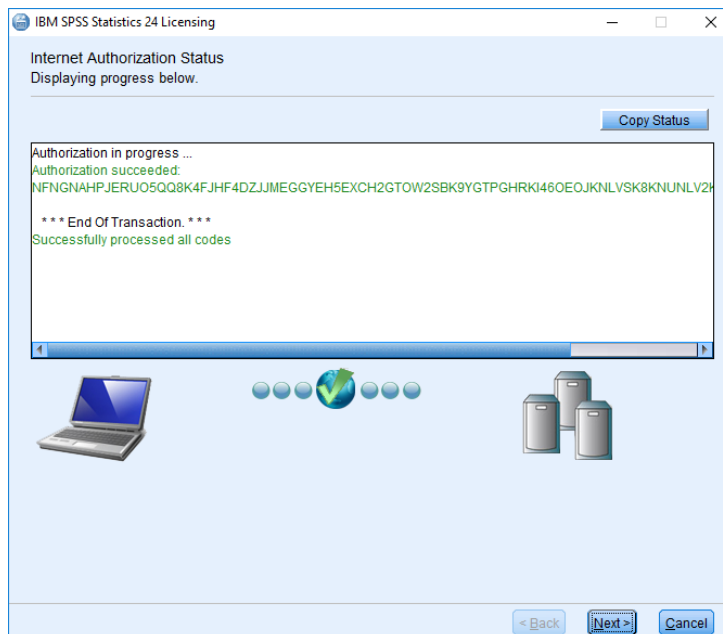
17. On the Product Authorization windows select **Authorized user license** and click **Next**.



18. Enter the **Authorization code** provided and click **Next**.



19. The status Window should now contain green text and state "**Successfully processed all codes**".  
If not, click back and ensure that you have an internet connection and typed the authorization code correctly. Click **Next**.





20. This screen displays when the product expires and the various modules that have been licensed. Click **Finish**.

