

Noticias News

Nouvelles

Volume 6 Issue 2

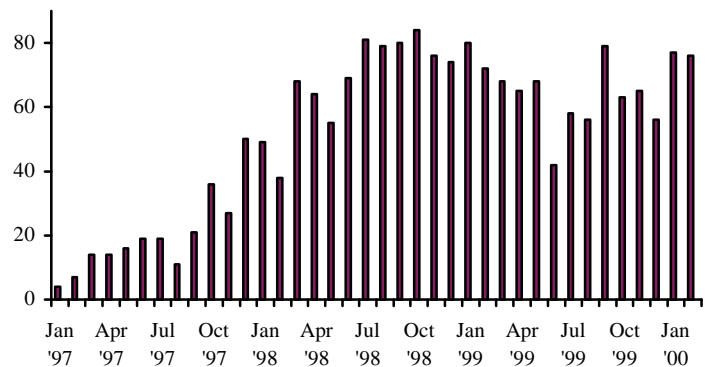
February 29, 2000

University of Toronto Maternal, Infant and Reproductive Health Research Unit
at The Centre for Research in Women's Health

Suite 751 790 Bay Street Toronto ON CANADA M5G 1N8 tel: 1 416 351 3776
fax: 1 416 351 8131 email: sheila.hewson@utoronto.ca website: www.utoronto.ca/breech

Women recruited in February: 76 Total to date: 1982

**Well done everybody!
Another terrific month.
Can we top it in March?**



American Collaborators' Meeting Planned

Invitations have been sent out to American collaborators at active sites in the USA, to join us April 28-29 in Albuquerque, New Mexico. We are grateful for the help of the TBT team in Albuquerque, Dr Ben Curet, Dr Franklyn Christensen, and Ms Kim Olson, in hosting this meeting, and we look forward to seeing our American collaborators there.

Mugs this month:

(for centres reaching or passing their annual goal)

**Eva Peron, Rosario, ARGENTINA (#4); Mona Vale, Sydney, AUSTRALIA (#4);
Universidad Catolica, Santiago, CHILE (#2); Medical University, Gdansk, POLAND
(#2); Arrowe Park, Wirral, UK (#2); Peterborough Maternity, Peterborough, UK.**



Canadian Collaborators' Meeting Held

A very successful meeting of the Canadian collaborators was held in Toronto on February 11 & 12. We are particularly grateful to Lynn Watson from London, Ontario and Judie Boland from Ottawa for their informative presentations of recruitment strategies. Judie also did a "demonstration interview", in which she simulated recruiting a patient, which proved to be very interesting.



The following people attended and took part in the discussions: Ms Cheryl Swaby, **Foothills**, *Calgary*; Ms Laurie Hensman, **Grey Nuns'**, *Edmonton*; Ms Elizabeth Penttinen, **Royal Alexandra**, *Edmonton*; Ms Jean Gallen, **St Joseph's**, *Hamilton*; Ms Mary Woodman, **Kingston General**, *Kingston*; Ms Cathy Ottenhof, **Kingston General**, *Kingston*; Ms Lynn Watson, **St Joseph's Health Centre**, *London*; Ms Carol Alfenore, **York County**, *Newmarket*; Ms Judie Boland, **Ottawa General**, *Ottawa*; Ms Dianne Renaud, **Ottawa Civic**, *Ottawa*; Ms Sally Elliott, **Regina General**, *Regina*; Dr Mary Cheng, **Scarborough Centenary**, *Scarborough*; Ms Christine J Kurt, **Scarborough Centenary**, *Scarborough*; Ms Pansy Honeyghan, **Scarborough Centenary**, *Scarborough*; Ms Christine Lumley, **Scarborough Centenary**, *Scarborough*; Dr Daniel Blouin, **CUSE (Site Fleurimont)**, *Sherbrooke*; Dr Kofi Amankwah, **Sunnybrook & Women's**, *Toronto*; Ms Rosemarie Cira, **Sunnybrook & Women's**, *Toronto*; Dr Vesna Popovska, **BC Women's**, *Vancouver*; Mrs Sari Fogg, **St Boniface General**, *Winnipeg*. Also attending from the Steering Committee were: Dr Mary Hannah, Dr Walter Hannah, Ms Patricia Guselle, Ms Sheila Hewson, Ms Binu Lamba Dhindsa and Ms Julie Weston, along with invited guests from MIRU Dr Fariba Aghajafari, Ms Eileen Hutton and Ms Robyn Stremler.

Interim II – Planning for the second interim analysis



We are asking various centres for final clarification of some data items. If you get a data query, please respond as soon as you can. These clarifications can be sent to us by email or fax, or even handled over the phone; **please do not use regular mail for this**. Your speedy reply will help to move us on to the analysis.

**By keeping TBT recruitment
at the top of our priority list,
we can do it.
Let's complete the trial this year!**