



Noticias *NEWS* Nouvelles

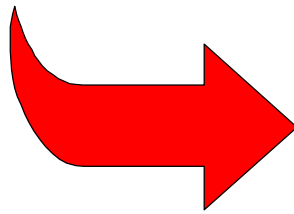
Volume 4 Issue 6

June 30, 1998

University of Toronto Maternal, Infant and Reproductive Health Research Unit
at The Centre for Research in Women's Health

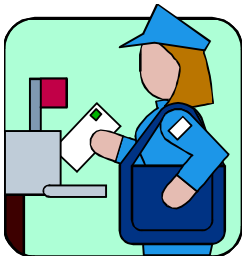
Suite 751 790 Bay Street Toronto ON CANADA M5G 1N8
tel: 1 416 351 3776 fax: 1 416 351 8131 email: sheila.hewson@utoronto.ca
website: www.utoronto.ca/breech

*Another
new
high!*



*Total recruitment = 581
69 recruited in June*

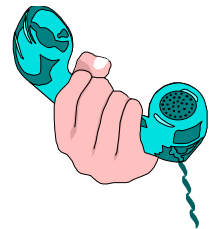
Please order early



Ask for new supplies of data booklets well in advance so that we can send them by mail and save on courier costs. If you are down to your last two sets of forms, it's time to re-order!

An upgrade

to the randomisation service is currently being tested at the Data Coordinating Centre. It should be operational very soon and will provide increased functions including service in Spanish. We will keep you informed.

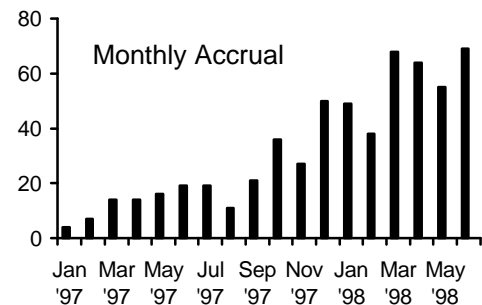


Mugs this month:

(for centres reaching or passing their annual goal)



University of Novi Sad, Novi Sad, YUGOSLAVIA; Hôpitaux Universitaires de Genève, Geneva, SWITZERLAND; Jundiaí, São Paulo, BRAZIL.



Centres recruiting for the first time:

Soroka Medical Center, Beer Sheva, ISRAEL (2 patients); Edith Wolfson Medical Center, Holon, ISRAEL; Harare Maternity, Harare, ZIMBABWE; ISCMPA-Maternidade M Totta, Porto Alegre, BRAZIL; Boston Medical Center, Boston, USA.

In discussing a question raised recently, the obstetricians on the Steering Committee agreed that it is quite acceptable to start oxytocin in the second stage of labour, even when it has not been used in the first stage.

Meeting Notes:

As promised last time, we will try to cover much of the information which



was discussed at the Collaborators' Meeting. Below, we outline the ideas discussed in the small group sessions on **Recruitment Techniques**. Although many of these points have been presented in the Newsletter and elsewhere before, recruitment is our single biggest challenge. Please review this information to look for strategies that might work for you.

Advertising:

Provide information early

(eg include a patient brochure with the initial package of hospital information)

Use posters

(in doctors offices, waiting areas, clinics)

Make presentations at antenatal classes

(use the patient video)

Educate/inform staff and renew presentations regularly

as staff change (slides and overheads are available from the Data Coordinating Centre; post the Newsletter)

Point out the availability of TBT information

at our website: www.utoronto.ca/breech

Sources of Patients:

Approach breech or ECV clinics

Contact obstetrician or family physician clinics/offices

Personnel:

Make sure that coordinator is:

highly visible, strongly associated with the TBT, readily available

Decide who approaches Patients:

coordinator, U/S staff, residents, registrars etc

Use a team approach:

clinician endorses TBT referring patient to coordinator for details

Educate and inform clinicians in surrounding municipality or region (presenting the varied approaches to breech delivery)

Waiting for your funds? Remember that funding is supplied for completed data booklets that have been received at the Data Coordinating Centre. Return yours promptly to avoid "overdue" notices and ensure timely payment.

Ethical issues:

Reinforce the idea of uncertainty among colleagues

Confirm that women being recruited do not have a strong management preference

General Issues

Note that women may participate for altruistic reasons and appeal to this trait

Point out that study participation is a positive choice made by the woman and her partner

Discuss openly the risks of both forms of management, indicating that both are in wide use

Offer TBT participation as the first of the available options when reviewing plans for delivery

Plan more than one visit for discussion prior to participation

Make the partner part of the discussions

Identify reasons why women refuse

Provide incentives to staff

Use role-playing as an educational tool with clinicians

Note that joining TBT provides a CME training opportunity for the participating site

The undiagnosed breech:

Discuss potential difficulties in recruiting women in labour (patient may feel stressed and have less time to consider)

vs. positive aspects (partner often present to provide input, a decision has to be made anyway)

Once you are supplied with the revised version of the 3 Month Postpartum Questionnaire please destroy any "old" copies which you may have on hand. [If a revised version has not yet been sent in your local language, it is currently being prepared and will be sent as soon as possible; please continue to use the existing version for now.]

Our next issue will provide contact details to help you keep in touch with all TBT collaborators.



Recruitment

Recruiting centres
as of June 30, 1998

Annual Goal	Jan-Jun	Jul-Sep	Oct-Dec	Jan-Mar	Apr	May	Jun	Total
	97	97	97	98	98	98	98	

(shaded area is prior to recruitment)

CANADA	143	26	11	26	22	10	9	10	114
UK	126	18	10	15	11	6	9	6	75
PAKISTAN	24		1	12	31	12	6	5	67
AUSTRALIA	70	3	3	8	23	6	5	2	50
SOUTH AFRICA	41	6	4	2	11	4	4	9	40
ARGENTINA	33	2	2	9	8	8	4	6	39
ISRAEL	68	2	6	7	4	5	6	6	36
INDIA	27	2	7	5	12	3	2	1	32
USA	57	2	2	12	9			2	27
BRAZIL	42			1	1	3	6	9	20
FINLAND	13	7	4	4	3	1			19
YUGOSLAVIA	15			5	8	1		1	15
JORDAN	42			1	4			6	11
CHILE	9	4	1	2	1	1	1		10
SWITZERLAND	9	2		1	2	2		2	9
POLAND	11			1	3	2	1		7
EGYPT	12						1	3	4
MEXICO	12				2		1		3
DENMARK	8			1					1
GERMANY	3			1					1
ZIMBABWE	39							1	1
Total	804	74	51	113	155	64	55	69	581

CANADA									
Riverside, Ottawa	6	10	2	7	3	3	2	2	29
St Joseph's, London	11	2	2	3	2	1			10
Guelph General	4	4	2	2		1			9
Women's College, Toronto	8	1		5	1		1		8
St Boniface, Winnipeg	10	1	1	2	2			1	7
Grey Nuns', Edmonton	9				2	2	1	1	6
Misericordia, Edmonton	9				1		2	3	6
BC Women's, Vancouver	19			1	4				5
Scarborough Centenary	7	2		1	1				4
Regina General	9			1	1	1		1	4
Mississauga	8			1	2				3
Royal Victoria, Barrie	4		1				2		3
St Joseph's, Hamilton	8				2				2
Foothills, Calgary	12					1		1	2
Kingston General	6						1	1	2
Ottawa General	7	1							1
Montfort, Ottawa	6					1			1
Centre(s) no longer recruiting									12

**Recruiting centres
as of June 30, 1998**

Annual Goal	Jan-Jun 97	Jul-Sep 97	Oct-Dec 97	Jan-Mar 98	Apr 98	May 98	Jun 98	Total
--------------------	-------------------	-------------------	-------------------	-------------------	---------------	---------------	---------------	--------------

(shaded area is prior to recruitment)

UK									
Bradford Royal Infirmary	11	1	2	4	3		2		12
Arrowe Park, Wirral	11	2	1	3	2	2	1	1	12
Leeds General Infirmary	11	6	1		3				10
Liverpool Women's	14	4	2	1		2		1	10
Treliske, Truro	11	3		2		1	1	2	9
Friarage, Northallerton	4	1	2		2				5
Peterborough Maternity Unit	9	1	1	1			1	1	5
St John's, Chelmsford	10					1	1	1	3
Ipswich	10			2					2
Ormskirk General	3						2		2
Lewisham	7			1					1
St James's University, Leeds	12			1					1
Northern General, Sheffield	8				1				1
Pilgrim, Boston	5						1		1
Centre(s) no longer recruiting									2

PAKISTAN									
Jinnah PMC, Karachi	14			6	30	9	2	5	52
Aga Khan Univ, Karachi	6		1	6	1		1		9
Liaquat National, Karachi	4					3	3		6

AUSTRALIA									
Mornington Peninsula, Frankston	5	2	2	5	2	1			12
Logan, Meadowbrook	8				6	3	1		10
Caroline Chisholm Centre, Liverpool	7				6	2	1	1	10
St George, Sydney	7		1	1	4				6
King George V, Sydney	12	1		1			1		3
Gosford	7				2		1		3
Mona Vale	2				1		1	1	3
Women's & Children's, Adelaide	3			1	1				2
Mater Mothers', Brisbane	19				1				1

SOUTH AFRICA									
Medunsa	25				8	4	3	8	23
Coronation, Johannesburg	16	6	4	2	3		1	1	17

ARGENTINA									
LC Lagomaggiore, Mendoza	19				5	5	3	5	18
Maternidad "Martin", Rosario	11	1	1	5	3	2	1	1	14
Ramos Mejia, Buenos Aires	3					1			1
Centre(s) no longer recruiting									6

ISRAEL									
Ma'ayney Hayeshua, Bene Beraq	10		4	4	3	2	1	1	15
Makassed Islamic, Jerusalem	5					2	5	2	9
Meir, Kfar Saba	14	2	1	2					5
Poriya, Tiberias	5		1	1	1	1			4
Soroka, Beer Sheba	25							2	2
Edith Wolfson, Holon	9							1	1

INDIA									
Nowrosjee Wadia, Mumbai	13	2	7	3	5	2	1		20
Christian Medical College, Vellore	14			2	7	1	1	1	12

**Recruiting centres
as of June 30, 1998**

Annual Goal	Jan-Jun 97	Jul-Sep 97	Oct-Dec 97	Jan-Mar 98	Apr 98	May 98	Jun 98	Total
-------------	------------	------------	------------	------------	--------	--------	--------	-------

(shaded area is prior to recruitment)

USA								
Univ New Mexico, Albuquerque	10	2	4	1				7
Univ Utah, Salt Lake City	6		2	3	2			7
St John's Mercy, St Louis	16		4	2			1	7
Univ of Iowa, Iowa City	4			3				3
University of Maryland, Baltimore	4		1					1
Baylor College of Medicine, Houston	12			1				1
Boston Medical Center	5						1	1

BRAZIL								
Jundiaí, São Paulo	6					3	5	8
Hosp das Clinicas da UFPE, Recife	10			1	2	3	1	7
Materno Infantil, Goiânia	13		1		1		2	4
ISCMPA, Porto Alegre	13						1	1

FINLAND								
Central University, Helsinki	13	7	4	4	3	1		19

YUGOSLAVIA								
Novi Sad	15		5	8	1		1	15

JORDAN								
Princess Badeea, Irbid	24		1	3			4	8
Islamic, Amman	18			1			2	3

CHILE								
Universidad Catolica, Santiago	9	4	1	2	1	1		10

SWITZERLAND								
Hôpitaux Universitaires, Geneva	7	2	1	1	1		2	7
Regionalspital, Biel	2			1	1			2

POLAND								
NRI of Mother & Child, Warsaw	6			1	2	1		4
University of Gdansk	5		1	2				3

EGYPT								
Assiut University	12					1	3	4

MEXICO								
Dr M G Gonzalez, Mexico DF	12			2		1		3

DENMARK								
Glostrup County, Glostrup	8		1					1

GERMANY								
University, Bonn	3		1					1

ZIMBABWE								
Harare Maternity	39						1	1

June 30, 1998, centres awaiting first patient: Centre, city, COUNTRY, (annual goal) [month/year start-up package sent]

Sótero del Río, Puente Alto, CHILE (37) [6/98]; Hosp Parroquial de San Bernardo, Santiago CHILE (9) [6/98]; Univ of Mississippi Medical Center, Jackson, USA (9) [6/98]; Bnai-Zion Medical Center, Haifa, ISRAEL (10) [5/98]; Atrium Medical Center, Heerlen, THE NETHERLANDS (5) [5/98]; National Women's, Auckland, NEW ZEALAND (31) [5/98]; Brantford General, Brantford, CANADA (4) [5/98]; LTMMC & LTMGH, Mumbai, INDIA (18) [4/98]; Polish Mothers Memorial, Lodz, POLAND (11) [4/98]; Royal University, Saskatoon, CANADA (11) [4/98]; Distrital, Faro, PORTUGAL (7) [4/98]; Chaim Sheba, Tel Hashomer, ISRAEL (18) [4/98]; Instituto Materno Infantil de Pernambuco (IMIP), Recife, BRAZIL (15) [3/98]; Maricopa, Phoenix, USA (8) [3/98]; Oakville-Trafalgar Memorial, Oakville, CANADA (5) [3/98]; York County, Newmarket, CANADA (5) [2/98]; Coombe Women's, Dublin, IRELAND (16) [2/98]; Hutzel, Detroit, USA (16) [2/98]; John Hunter, Newcastle, AUSTRALIA (9) [1/98]; University of Michigan Medical Center, Ann Arbor, USA (8) [1/98]; Grand River, Kitchener, CANADA (10) [1/98]; Ludwig Maximilians, Munich, GERMANY (4) [1/98]; North Staffordshire, Stoke-on-Trent, UK (15) [1/98]; Virchow Klinikum, Berlin, GERMANY (9) [10/97]; Mount Sinai, Toronto, CANADA (12) [8/97]; Oregon Health Sciences University, Portland, USA (6) [8/97]; Nanaimo Regional General, Nanaimo, CANADA (3) [3/97]; West Cumberland, Whitehaven, UK (4) [3/97]; Albert Einstein Med Center, Philadelphia, USA (5) [2/97]; North Bay General, North Bay, CANADA (3) [2/97].