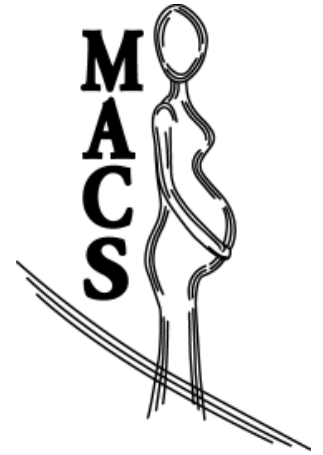


December 31, 2001
Volume 2, Issue 13

MACS news



Data Coordinating Centre
MIRU
7th Floor, 790 Bay Street
Toronto, ON Canada
M5G 1N8

Phone:
(1) 416-351-2530

Fax:
(1) 416-351-2531

E-mail:
kate.bassil@swchsc.on.ca

Website:
www.utoronto.ca/macs



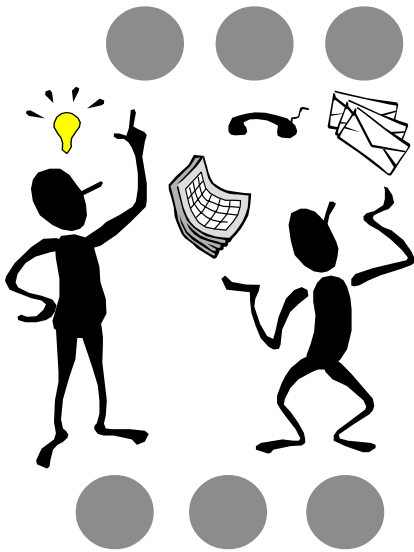
Overall Total: 69
Total this month: 8

Happy New Year
and
Best Wishes for 2002!

We are looking forward to seeing many of you later this month at the Society for Maternal Fetal Medicine meeting, January 14-19 in New Orleans.

Please join us for the MACS and NIH wine and cheese reception on Thursday, January 17, 7- 8:30 pm in the Rosedown Room, 3rd level, New Orleans Hilton Riverside.





Recruitment:

We know that you are all doing your best to recruit patients into MACS. Thank you for all of your hard work! We hope to boost recruitment in the upcoming months. If you have any ideas as to what works well with recruiting at your centre please let us know. We are interested to hear your experiences thus far!

Good Clinical Practice (GCP): Consolidated Guideline:

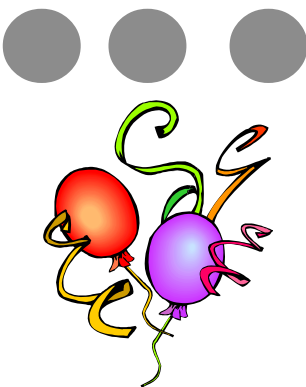
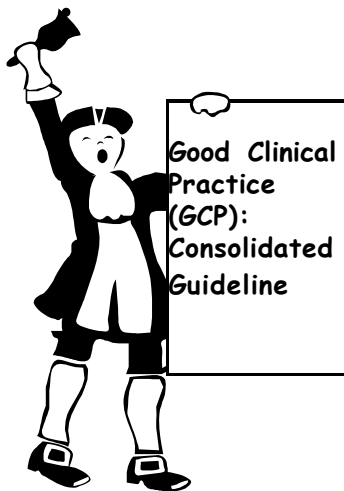
GCP was designed to provide a standard for conducting clinical trials by the ICH (International Conference on Harmonisation of Technical Requirements for Registration of Pharmaceuticals for Human Use). This international guideline has been adopted by the Therapeutic Products Directorate of Health Canada to ensure that study protocols are prepared according to international standards and that the roles and responsibilities of the investigator and collaborators are clearly defined and followed. As the MACS study is run in compliance with GCP we will be addressing several points over the next few newsletters.

For example, one of the issues addressed by GCP regards the maintenance of reports and records at each participating centre. It is important for coordinators to have a secure and locked space for MACS forms and data booklets to prevent damage or loss of any of the documents.

If you are interested in reading more about GCP please refer to www.hc-sc.gc.ca/hpb-dgps/therapeut

Welcome!

We are happy to welcome Sunnybrook and Women's College Hospital in Toronto and IWK Health Centre in Halifax to MACS!





Recruitment

(Projected sample size of 1900 by July 2004)

as of December 31, 2001

Annual Goal	Apr - Jun	Jul - Sept	Oct	Nov	Dec	Grand Total
	01	01	01	01	01	

COUNTRY

COUNTRY	Annual Goal	Apr - Jun 01	Jul - Sept 01	Oct 01	Nov 01	Dec 01	Grand Total
CANADA	84	7	12	3	4	3	29
ISRAEL	93	5	7	2	2	4	20
DENMARK	15	5	2		1	1	9
USA	22	7		1			8
SWITZERLAND	5		2	1			3
Total	219	24	23	7	7	8	69

CENTRES BY COUNTRY

CANADA							
Mount Sinai, Toronto	23	2	3		3	1	9
Royal University, Saskatoon	13	1	5	2			8
Children's & Women's, Vancouver	24	3	2	1	1		7
CHUS (Fleurimont), Sherbrooke	10	1	1			1	3
Royal Alexandra, Edmonton	14		1			1	2

ISRAEL							
Rabin, Petach Tikva	26	1	4	1	1	2	9
Ma'ayne Hayeshua, Bnei Brak	16	4		1	1	1	7
Bnai Zion, Haifa	13		2			1	3
Soroka, Beer Sheva	38		1				1

DENMARK							
Aarhus University, Aarhus	15	5	2		1	1	9

USA							
Montefiore, Bronx	13	6		1			7
Albany Medical Center, Albany	9	1					1

SWITZERLAND							
CHU Vaudois, Lausanne	5		2	1			3

Centres awaiting first patient: [COUNTRY: Hospital, City (annual goal)] [month/year start-up package sent]

CANADA: Regina General, *Regina* (10) [07/01]; St Boniface General, *Winnipeg* (13) [11/01]; IWK Health Centre, *Halifax* (16) [12/01]; Sunnybrook & Women's College, *Toronto* (12) [12/01]. **ISRAEL:** Poriya Government, *Tiberias* (7) [05/01]; Meir, *Kfar-Saba* (18) [06/01]; Haemek, *Afula* (13) [07/01]. **USA:** Maricopa, *Phoenix* (11)[04/01]; University of New Mexico, *Albuquerque* (12)[10/01]. **THE NETHERLANDS:** Atrium, *Heerlen* (6) [07/01].