

Introduction

Investing in the Landscape presents targeted actions for six areas within the Revitalization Armature, which are profiled in detail as Demonstration Sites. These targeted actions were developed in consultation with the Open Space Steering Committee. All of the chosen sites are within the Pedestrian Priority Zone, as described in the Open Space Revitalization Strategies section of the Plan.

The Demonstration Sites should not be considered as isolated undertakings but rather as first steps to illustrate the potential of the campus open spaces to achieve the vision and Primary Objectives outlined in the Plan. Most of the sites contain a wide range of opportunities for both large and small scale projects, and portions of the sites could be undertaken as separate capital projects.

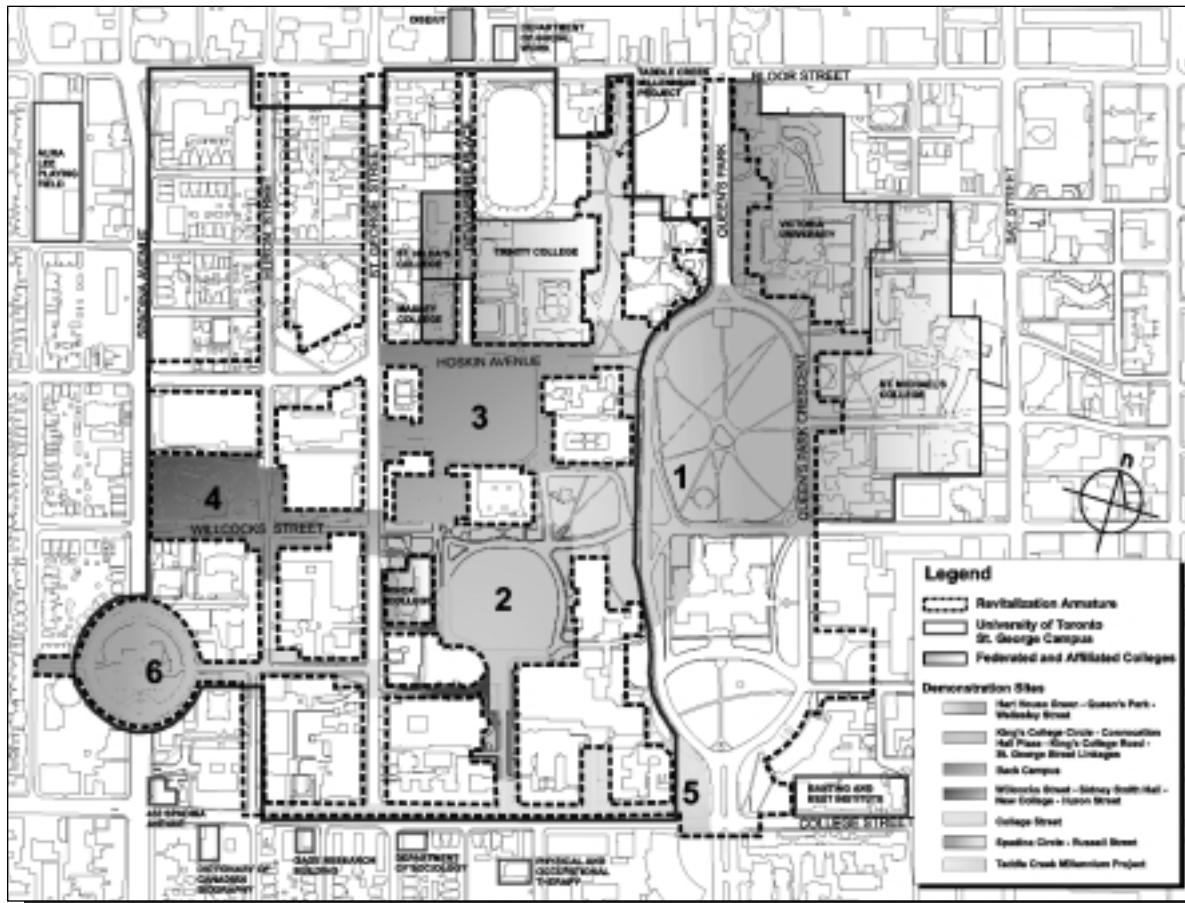
Each Demonstration Site contains four levels of information:

1. Base information on key buildings, focal points and the identification of the University Development Sites.
2. An analysis of pedestrian movement characteristics.
3. A Detailed Master Plan Concept drawing that describes the basic changes proposed for the site.
4. A rendering to illustrate the landscape design concept for each site.

The information has been saved in a digital format and can be used for a variety of purposes, including to structure partnerships, develop funding programs and provide background information for design competitions and commissions.

2

Demonstration Sites



2.1

Hart House Green - Queen's Park - Wellesley Street Demonstration Site

Goals

- *To reconnect the historic open spaces of the University district;*
- *To re-image Hart House Green by revitalizing the landscape and restoring a water feature with possible storm water management functions;*
- *To reconfigure the Queen's Park Crescent and Wellesley Street intersections and the Wellesley Street corridor to create a pedestrian-oriented entry to the campus, Queen's Park and the Ontario Legislature.*

Project Summary

Hart House Green, Queen's Park and the Ontario Legislature are part of the original layout of the University district. Until 1954, these three open spaces were more or less continuous, interwoven with small scale roads and paths. This condition changed when the western side of Queen's Park Crescent was formalized. The spaces are now divided by a grade-separated automobile overpass on Queen's Park Crescent.

The revitalization of Hart House Green is the primary action needed to reconnect the significant open spaces of the University district. A complete reconnection also requires removing the Queen's Park Crescent overpass, rebuilding an at-grade intersection and improving Queen's Park and Wellesley Street. A proposed landscape of trees, the use of topography and a water feature at the intersection will transform this entry to the campus and make the Queen's Park Crescent and Wellesley Street intersection an important focal point in the city.

The Hart House Green - Queen's Park - Wellesley Street space is a Gateway Site to the entire University and Queen's Park district. Its redesigned landscape should be of landmark quality and create a new main entrance to the St. George Campus that will provide strong linkages to the Federated and Affiliated Colleges and Universities to the east of Queen's Park Crescent.

Key Buildings, Focal Points and University Development Sites

Demonstration Site 1 contains several of the most recognizable architectural landmarks on the campus including the east facade of University College, the Memorial Wall, Soldiers' Tower, Hart House, the Observatory, the Volunteers' Monument and the Provincial Legislature. Several significant trees are present in the space, most notably a large beech in the northeast corner adjacent to Hart House. The topography of Taddle Creek is still evident in the west-to-east slope of the site.

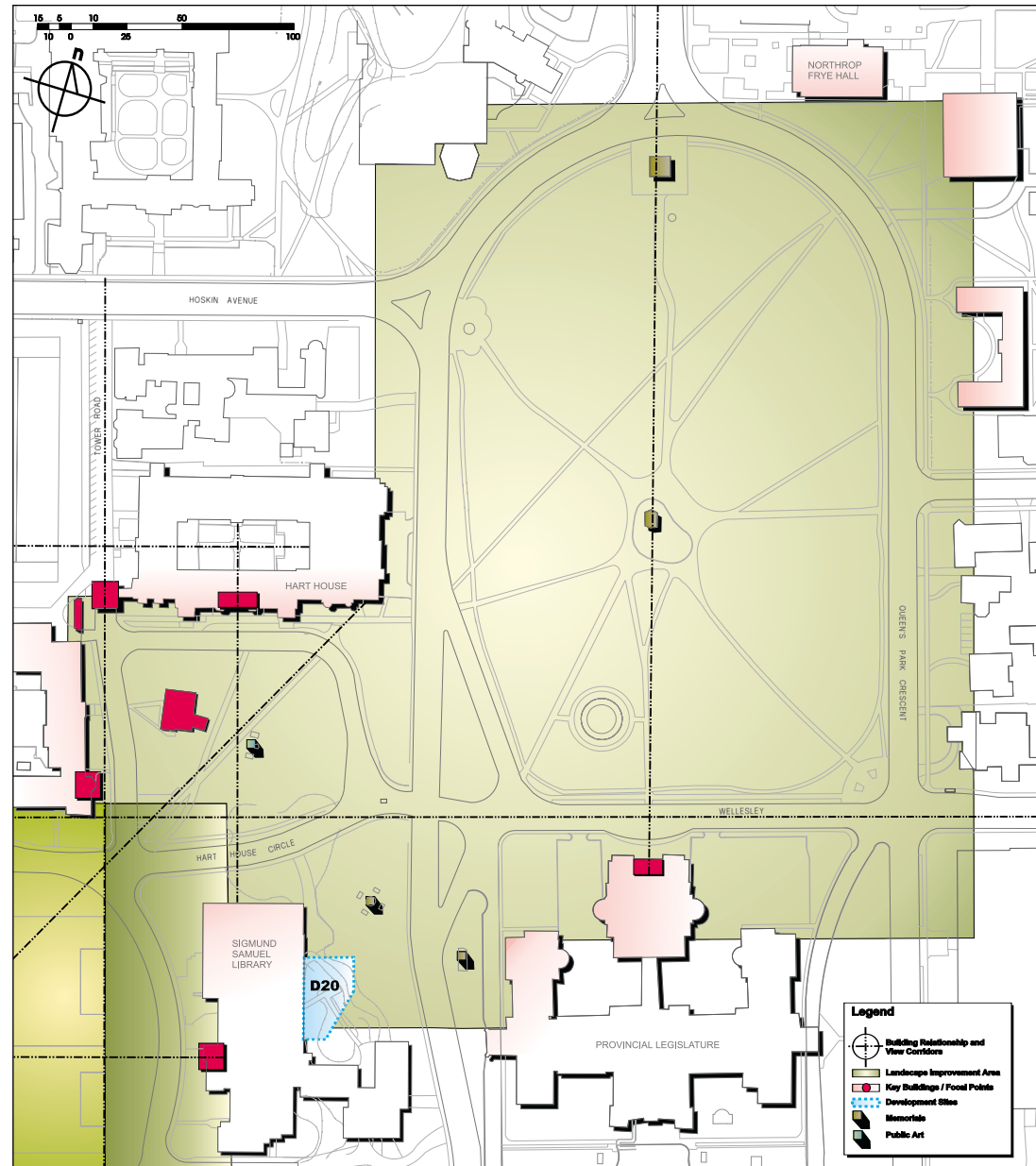
University Development Site 20, an extension to the Sigmund Samuel Library, is part of the Demonstration Site.



Drawing DS1 - 1: Key Buildings / Focal Points / Development Sites

Demonstration Site 1:

Hart House Green - Queen's Park - Wellesley Street



Pedestrian Movement

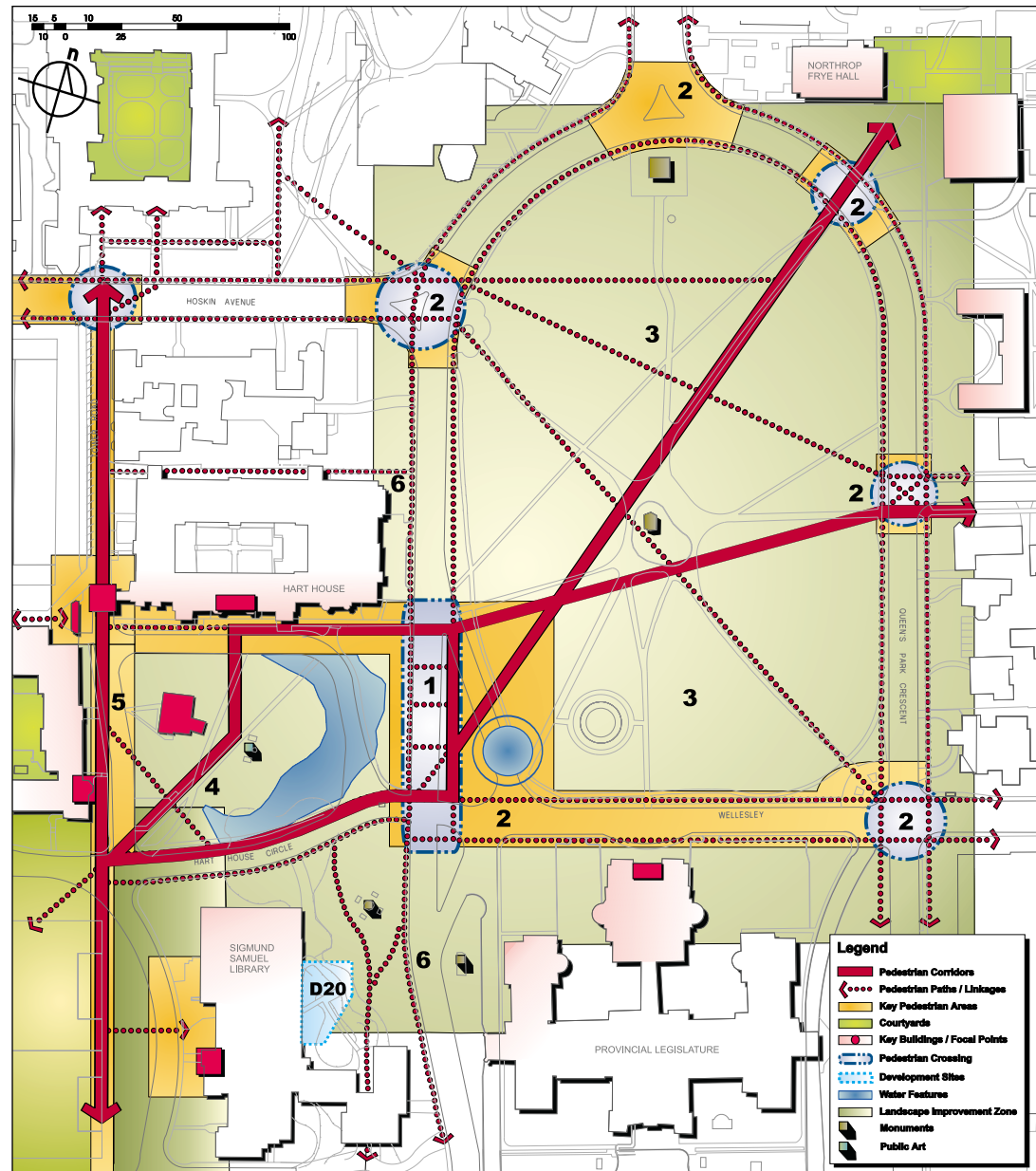
The following list of items includes issues related to pedestrian routes that should be considered in the redesign of the Demonstration Site. The numbered items refer to drawing **DS1-2**.

1. A major pedestrian crossing between the St. George Campus and Federated and Affiliated Colleges and Universities east of Queen's Park occurs at the intersection of Hart House Green and Queen's Park Crescent.
2. The large number of pedestrian crossings at Queen's Park Crescent create conflicts with fast-moving vehicular traffic (see the technical report prepared by Marshall Macklin Monaghan for further details).
3. Many pedestrian routes exist through Queen's Park. Several of these routes are not currently expressed in the pathway system.
4. Significant diagonal movement occurs through the Hart House Green.
5. There is a significant north-south pedestrian route through Soldiers' Tower.
6. Pedestrian movement along Queen's Park Crescent is constrained by narrow sidewalks.

Drawing DS1-2: Pedestrian Movement

Demonstration Site 1:

Hart House Green - Queen's Park - Wellesley Street



Detailed Master Plan Concept

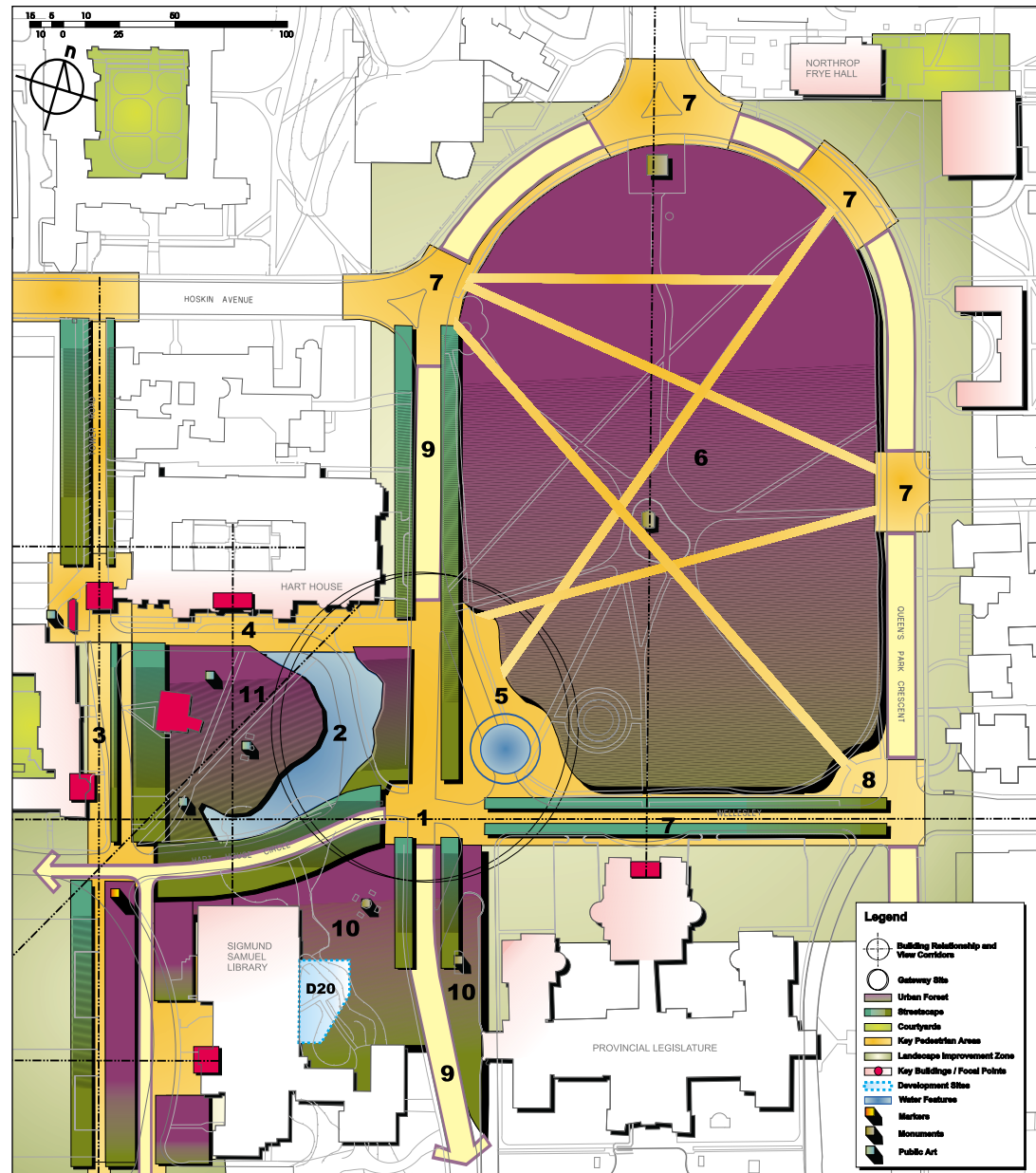
The following list of features and concepts is proposed as the framework for this Demonstration Site. The numbered items refer to drawing **DS1-3**.

1. The grade-separated overpass on Queen's Park Crescent should be removed in favour of an at-grade, signalized intersection at Queen's Park Crescent and Wellesley Street. The reconstructed intersection should be part of an overall plan to improve pedestrian conditions and crossings of Queen's Park Crescent. A new pedestrian crossing zone should extend from Hart House to Wellesley Street to accommodate the pedestrian volumes and distinguish this area as a special pedestrian zone.
2. A water feature should be constructed roughly in the location of the original McCaul's Pond. Opportunities exist to use this feature to demonstrate new methods of storm water management in an urban environment. It should be studied to identify opportunities for integration into the Taddle Creek Millennium Project as the ultimate location for storm water storage from that system. The area around the water feature should be capable of supporting special events and significant pedestrian volumes throughout all seasons. The knoll and area around the feature should be extensively planted with deciduous and coniferous trees to extend the landscape of Queen's Park into this space.
3. Linear planting schemes should reinforce the north-south movement of the pedestrian route through Soldiers' Tower and create a strong edge of trees to the western side of the Hart House Green.
4. A special paving area should allow for temporary parking and multiple vehicle drop-off for special events at Hart House.
5. The southwest corner of Queen's Park will become larger as a result of land reclaimed from the overpass. This area should be developed as an extension of the special intersection treatment at Queen's Park Crescent and Wellesley Street. A small water feature should be considered as a focal point on this corner. The elevation of this area should be carefully blended to the intersection grade to allow visual access to the Federated and Affiliated Colleges and Universities across the park.
6. The pathways through Queen's Park should be evaluated against actual pedestrian movement. Non-functional paths should be removed and new paths associated with actual pedestrian crossings should be created. Lighting along the pathways should be reviewed to address dark areas, gathering points and road crossings. The reconsideration of Queen's Park could also include the replacement of the bandstand, a lighting plan, furniture and accessory upgrades and a comprehensive planting and tree preservation program.
7. The pedestrian crossings around Queen's Park Crescent should be reviewed as part of a comprehensive traffic calming and pedestrian improvement plan for the district. Wellesley Street should be reconfigured as a park street with continuous street trees and a strong pedestrian sidewalk system on each side of the street to link Queen's Park, the Legislature and the Hart House Green. The street should be capable of accommodating special events and festivals.
8. The eastern intersection of Wellesley Street and Queen's Park Crescent should signal the entrance to the University district and mark the entrance to a reconfigured Wellesley Street.
9. Sidewalks along Queen's Park Crescent should be widened and separated from the roadway by a planting strip with street trees to enhance pedestrian amenity and safety. Pedestrian scale lighting should be installed along the length of the street.
10. The existing Volunteers' Monument and the William Lyon Mackenzie Monument should be integrated into the new design of Queen's Park.
11. The Hart House Green should be considered for public art installations.

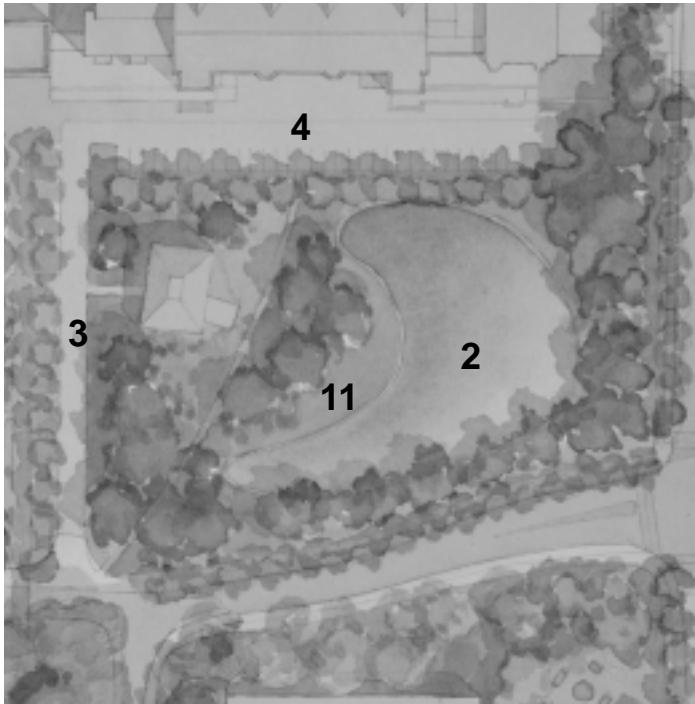
Drawing DS1-3: Detailed Master Plan Concept

Demonstration Site 1:

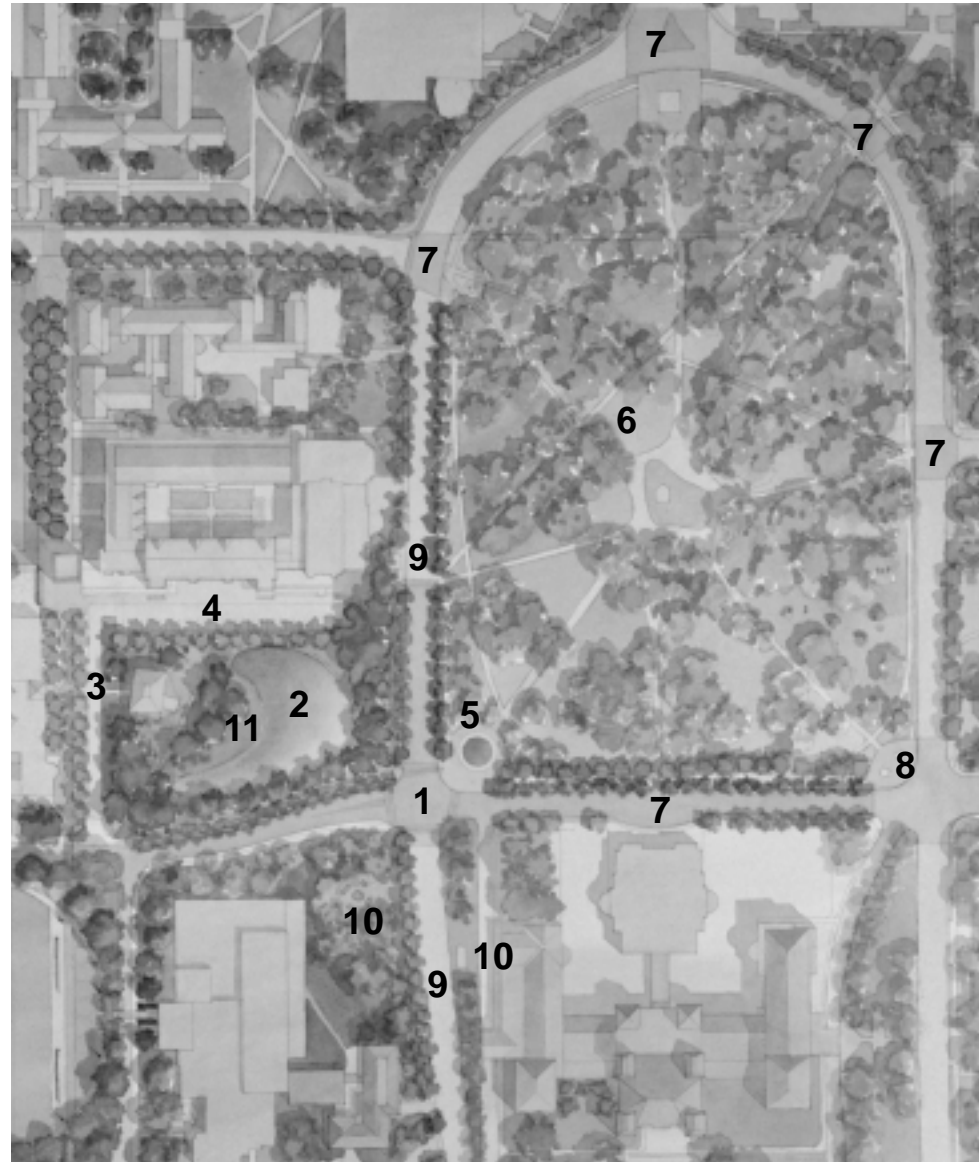
Hart House Green - Queen's Park - Wellesley Street



Drawing DS1 - 4 : Master Plan Concept



The *Hart House Green* will contain a water feature and extensive planting.



Improved pedestrian crossing zones at Wellesley Street and on Queen's Park Crescent will improve safety for pedestrians crossing to and from the east and west parts of the University.

Drawing DS1-5: Master Plan Concept



2.2

King's College Circle - Convocation Hall Plaza - King's College Road - St. George Street Linkages Demonstration Site

Goals

- *To revitalize the historic centre of the University;*
- *To establish a landscape of significant deciduous trees in the Central Campus;*
- *To improve connections to Back Campus, St. George Street and College Street;*
- *To create a significant and special space in front of Convocation Hall.*

Project Summary

The proposed changes to King's College Circle, King's College Road and Convocation Hall Plaza will transform the landscape of the Central Campus and define three specific and different spaces. King's College Circle, an oval of green surrounded by plantings of deciduous trees will provide a foreground to the historic structures of the Central Campus. A central walkway along the east side of King's College Circle through Soldiers' Tower will lead to the Back Campus. Convocation Hall Plaza will provide the stage for the ceremony of the campus and create a central gathering point for special events. King's College Road is proposed to be gated at each end and provide both a forecourt to the adjacent academic buildings and a defined sequence of entry into the Central Campus open spaces. Automobile movement will be reduced to favour pedestrian needs and surface parking will be removed.

King's College Circle and King's College Road are the historic centre of the University. This Demonstration Site represents the revitalization of the heart of the St. George Campus open space system. The result should be a landscape of landmark status.

Key Buildings, Focal Points and University Development Sites

The site is a combination of three important places: King's College Road, Convocation Hall and King's College Circle. King's College Circle is the largest open space on campus and is used as a multi-purpose space for playing fields, informal recreation, convocation processions and as a cross-campus pedestrian route. Architectural scale and quality around the open space varies greatly. The north, west and southwest edges are surrounded by historic structures including University College, Knox College, Convocation Hall and Simcoe Hall. The historic Sigmund Samuel Library tower faces the eastern edge of the space.

King's College Road has a planting of oak trees along its edges, in various stages of growth and health. The setbacks between the buildings and King's College Road have a variety of foundation planting schemes in various stages of growth and health.

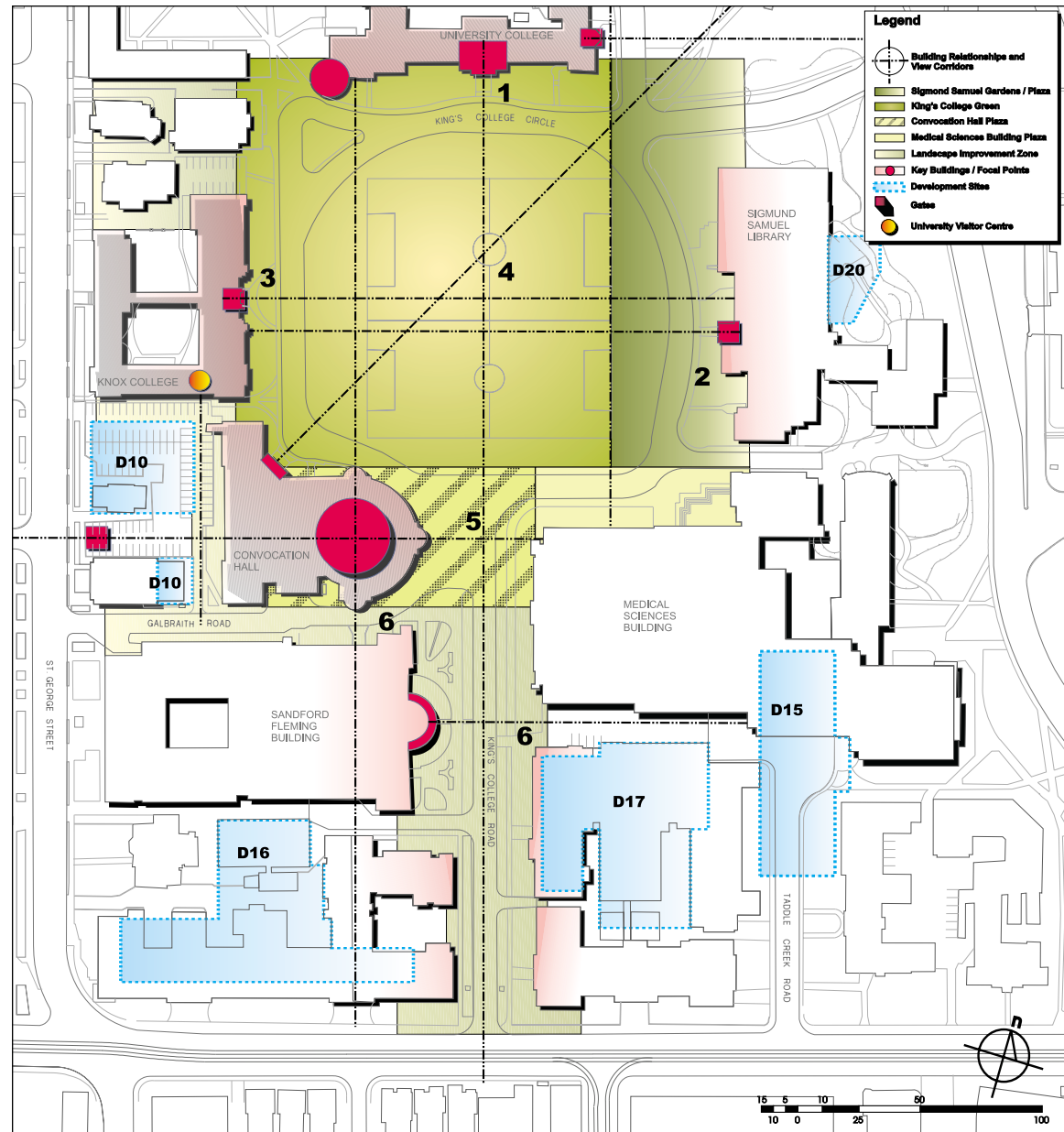
The site has a great many significant focal points including the historic building facades of the Sandford Fleming Building, Knox College, the Sigmund Samuel Library tower and University College, as well as the Convocation Hall dome and steps. The long view from College Street to the facade of University College and the open visual characteristics of the central space are important components of this space and need to be preserved.

There are no University Development Sites that would change the massing or form of the buildings that surround the space.

Drawing DS2 - 1: Key Buildings / Focal Points / Development Sites

Demonstration Site 2:

King's College Circle - Convocation Hall Plaza - King's College Road - St. George Street Linkages



Pedestrian Movement

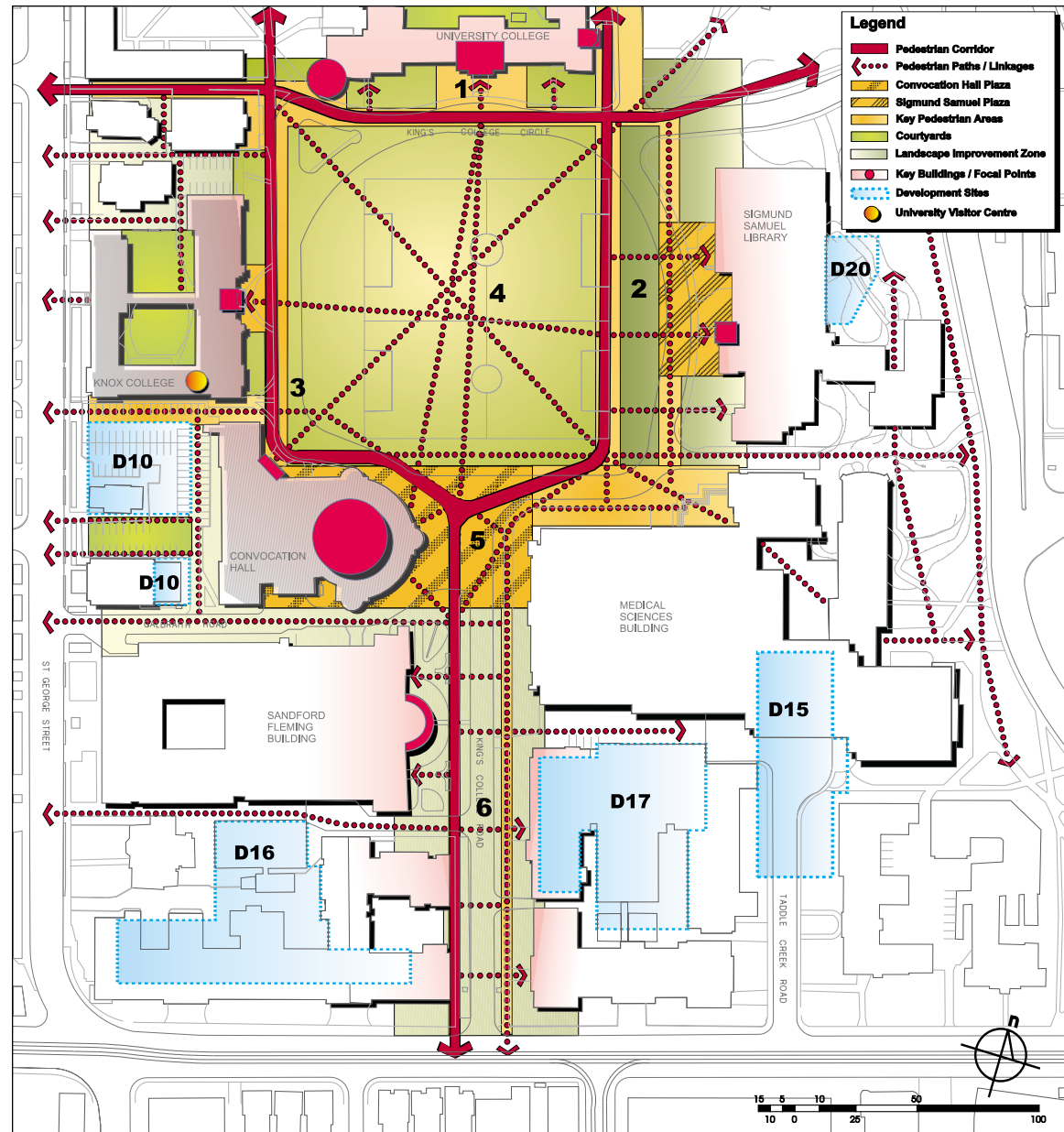
The following issues related to pedestrian routes should be considered in the redesign of the Demonstration Site. The numbered items refer to drawing **DS2-2**.

1. A major pedestrian flow between the east and west areas of the campus exists along the face of University College, extending from St. George Street to Queen's Park Crescent.
2. A significant amount of pedestrian traffic occurs between the Medical Sciences Building through Soldiers' Tower to Trinity College.
3. A major pedestrian flow occurs along the western edge of King's College Circle.
4. The central open area and playing field is the location of many diagonal pedestrian crossings. Issues of snow clearing and lighting are important to these movements.
5. There are conflicts between vehicles and pedestrians in the space in front of Convocation Hall.
6. The pedestrian route along King's College Road crosses several east-west routes to the West Campus and Queen's Park.

Drawing DS2-2: Pedestrian Movement

Demonstration Site 2:

King's College Circle - Convocation Hall Plaza - King's College Road - St. George Street Linkages



Detailed Master Plan Concept

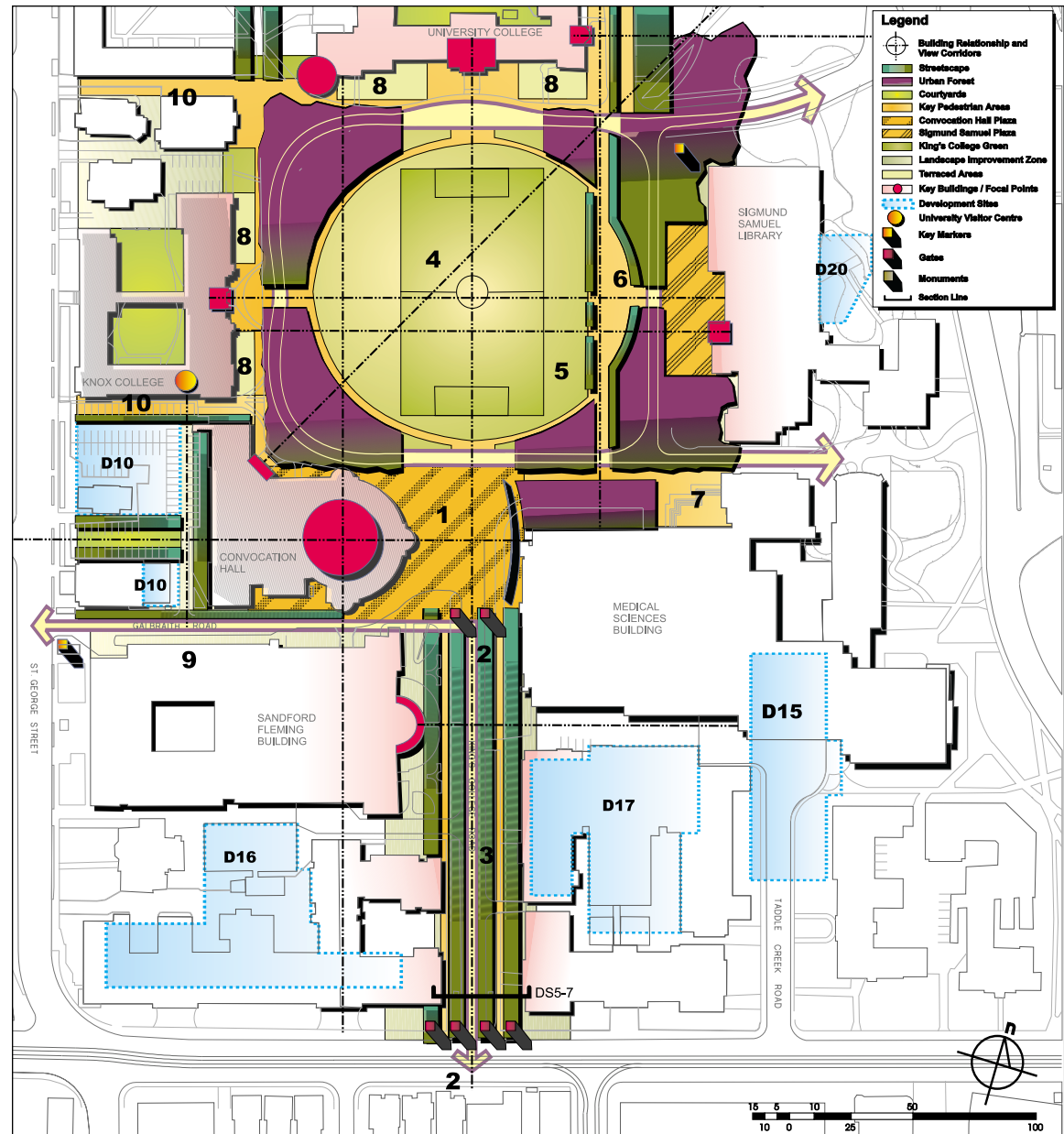
The following list of features and concepts is proposed as the framework for the redesign of the Demonstration Site. These items are referenced to drawing **DS2-3**.

1. The area in front of Convocation Hall should be developed as a Plaza suitable for student gathering and special events including convocation functions. The Convocation Hall Plaza should be free of automobiles. A feature wall at the corner of the Medical Sciences Building is proposed as the plaza's eastern backdrop; this wall should be considered for possible memorial use.
2. The King's College Road/College Street entrance is proposed as the location of a new ceremonial gate to the campus. A second gate is proposed at the head of King's College Road adjacent to the Convocation Hall Plaza. The gates should reinforce the axial view from College Street to University College.
3. King's College Road should be rebuilt with a new cross section, pedestrian walkways, lighting and double street tree planting on each side of the roadway to recognize the importance of this historic entrance to the campus. Automobile movement should be restricted to one lane, in a northbound direction, to Galbraith Road. The streetscape should reinforce the axial view from College Street to University College.
4. The central open space should be an oval of green that includes a new multi-use playing field structured on axis with King's College Road. The space should retain an open character defined by several existing and new large scale deciduous trees. Pedestrian walkways should be placed around the entire space and sized to allow significant pedestrian movements. Diagonal pedestrian crossings should be accommodated in the field by snow clearing. Lighting should illuminate the entire field area for pedestrians. The irregular road that currently exists should be reconfigured to a narrow one-way route. Parking should be removed and an automobile drop-off area should be created at the front door of each building surrounding the space.
5. The eastern edge of the central space, in line with the east corner of University College, should be defined by a new pedestrian spine and landscape feature extending from the Medical Sciences Building through Soldiers' Tower to the Back Campus. The spine should become a student gathering place and viewing area for the field with seating and lighting.
6. The area east of the pedestrian spine in front of the Sigmund Samuel Library should be used to create a garden and contemplative space with significant deciduous and coniferous tree planting and perennial flower gardens. The landscaped area should contain a student gathering and seating area in front of the library.
7. The steps and terrace of the Medical Sciences Building should be reconfigured as a student gathering place. Additional tree planting should be installed along the north facade of the building to extend the landscape of the King's College green.
8. The upper grass terraces in front of Knox College and University College should be used as elevated seating and viewing areas to animate the edges of King's College Circle.
9. Galbraith Road should be improved for pedestrian use and automobile movement should be confined to one-way, moving westbound. Additional tree planting will soften the building edges.
10. There are two significant pedestrian linkages between St. George Street and King's College Circle: one between the south wall of Sir Daniel Wilson Residence and 63 and 65 St. George Street, and one along the south wall of Knox College, which houses the University Visitor Centre. Both linkages should be developed as fully landscaped pedestrian walkways constructed of materials that match those used for the pedestrian paths in The King's College Green. The walkways should include pedestrian scale lighting and signage at each end.

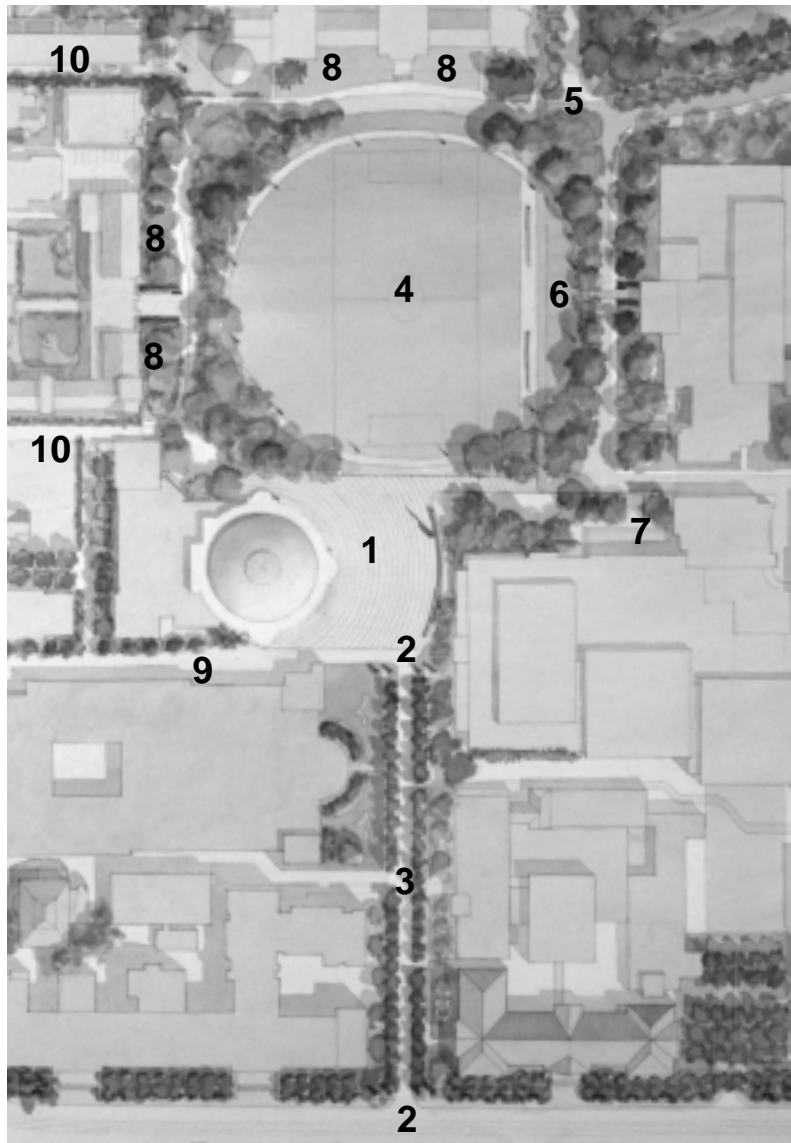
Drawing DS2-3: Detailed Master Plan Concept

Demonstration Site 2:

King's College Circle - Convocation Hall Plaza - King's College Road - St. George Street Linkages



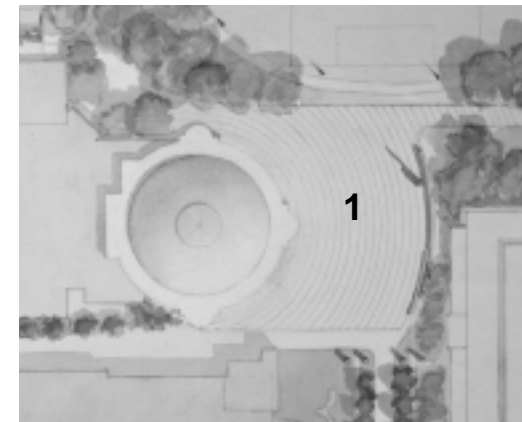
Drawing DS2-4: Master Plan Concept



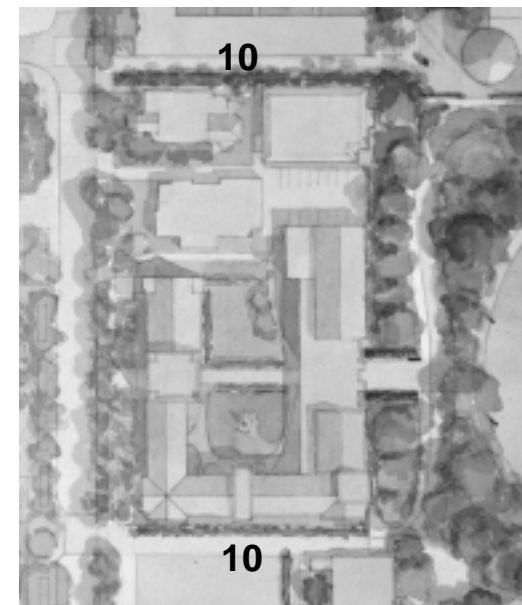
The *historic centre* of the University: King's College Circle, Convocation Hall Plaza and King's College Road will connect to St. George Street through enhanced pedestrian linkages.



A *north-south pedestrian spine* through Soldiers' Tower connects the Front and Back Campus areas.

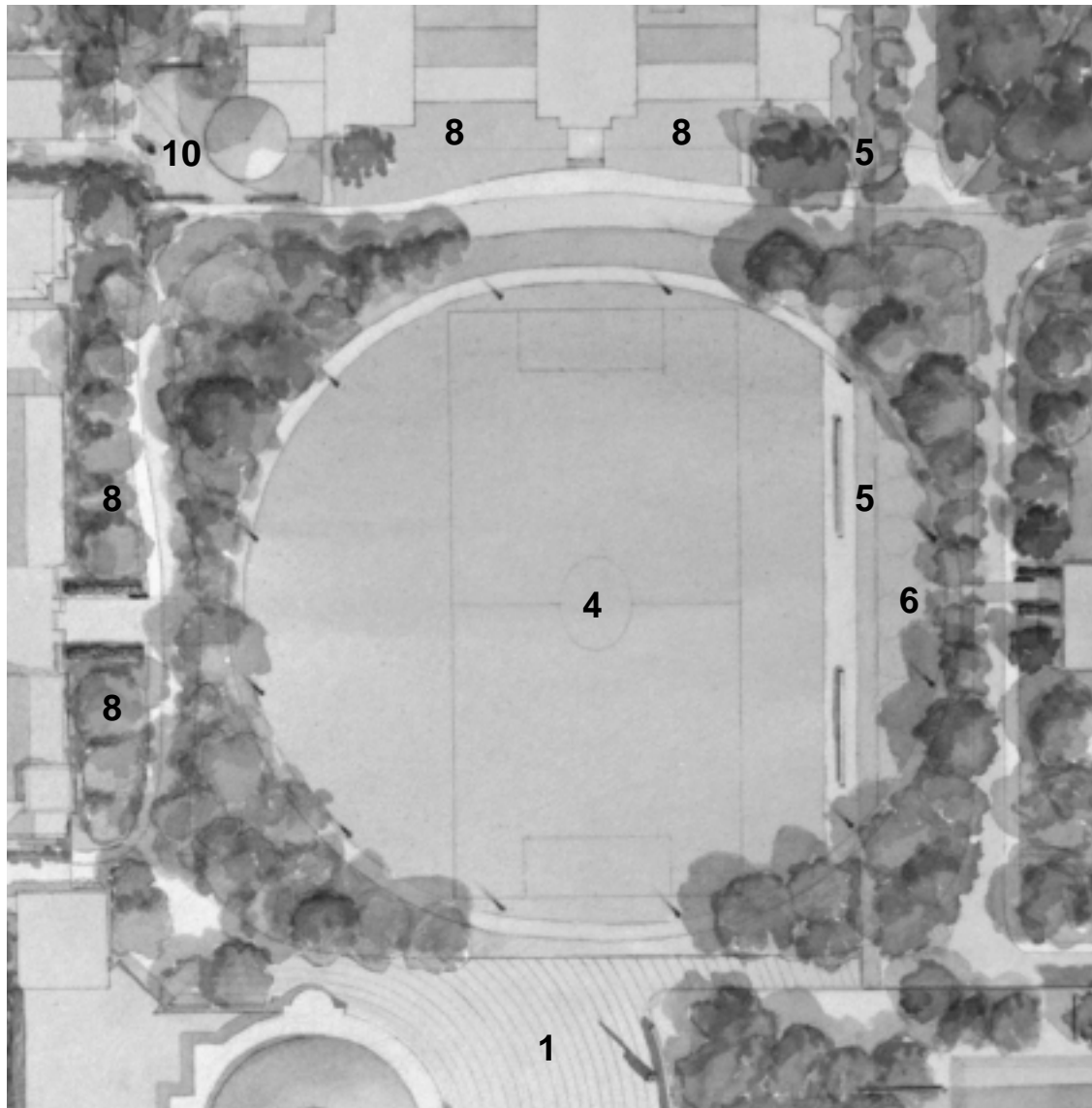


The Convocation Hall Plaza and its feature wall will create an area suitable for student gathering.



Major and minor pedestrian pathways created along St. George Street will connect the east and west campus areas.

Drawing DS2-5: Master Plan Concept



The King's College Circle Central Open Space will include new gardens and landscape features, student gathering places, contemplative spaces and a new multi-use playing field.

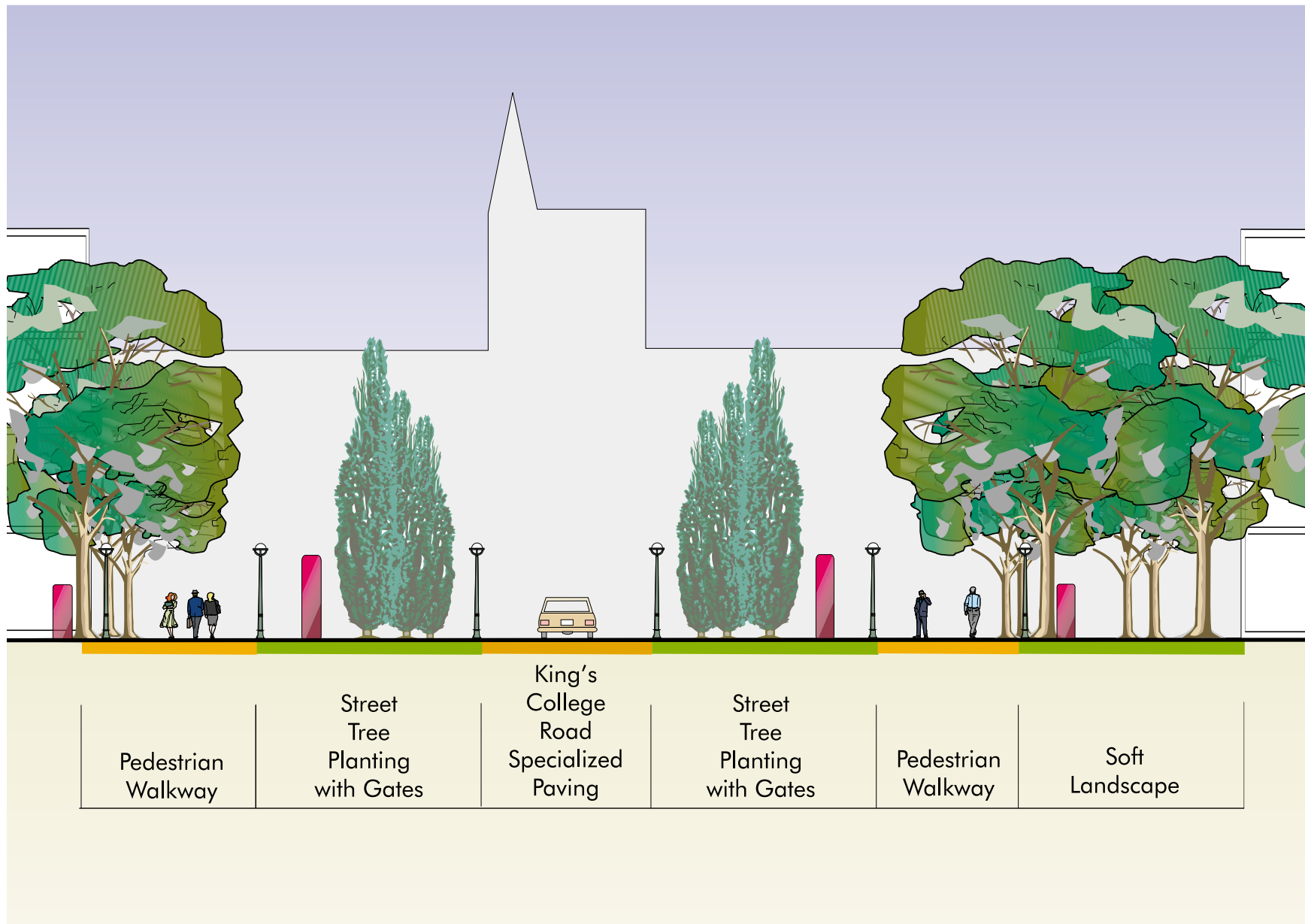


King's College Road will contain new pedestrian walkways, lighting and street tree planting.

D r a w i n g D S 2 - 6 : M a s t e r P l a n C o n c e p t



Drawing DS2-7: Proposed King's College Road Cross Section



2.3 Back Campus Demonstration Site

Goals

- *To revitalize this historic campus open space;*
- *To create a landmark-status landscape;*
- *To improve connections to Hart House Green and the Front Campus.*

Project Summary

Surrounded by high quality historic buildings, the revitalized Back Campus will become a significant open space in the heart of the campus. It offers the potential to provide high quality recreational playing fields, significant additions and improvements to the landscape of deciduous trees and contemplative spaces on campus, and four commemorative walks and associated gardens. The eastern edge of the space and the Soldiers' Tower passage are proposed to be linked to a new central walkway leading to Hart House Green and the Front Campus. The University Art Centre in University College will have an entrance from the Back Campus in the form of a sculpture court behind the Memorial Wall.

The Back Campus design is a focal point of open space revitalization in the centre of the University. A complete redefinition of the space is proposed to achieve a landscape of landmark stature.

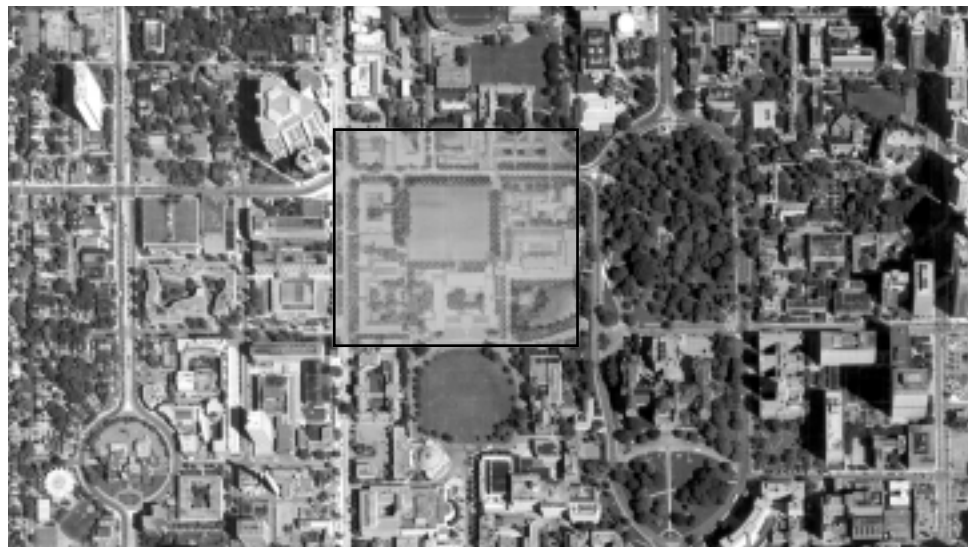
Key Buildings, Focal Points and University Development Sites

The Back Campus is one of the original features of the University and one of the four major open spaces in the district.

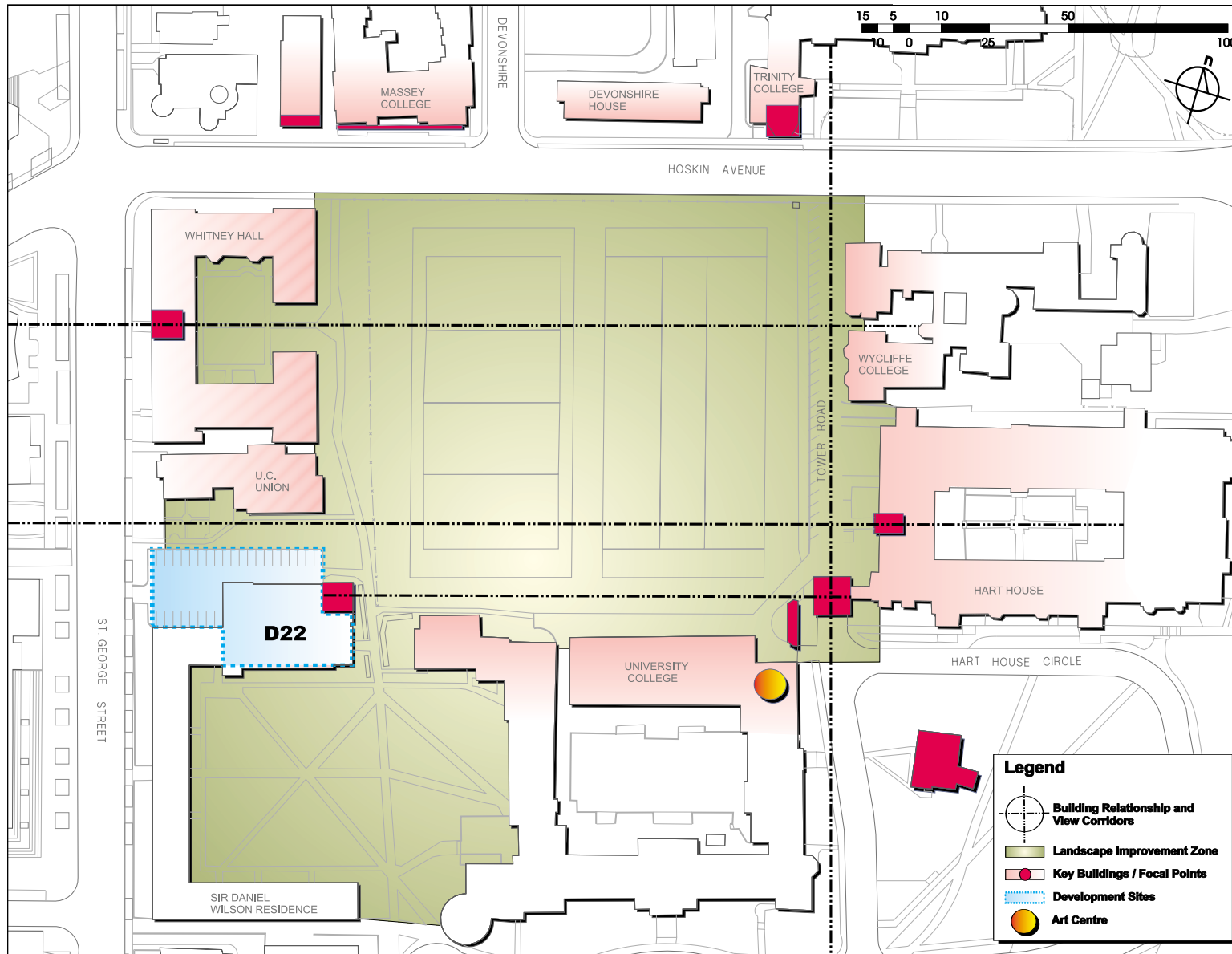
Its four sides are surrounded by architecture of similar scale, quality and materials, including the historic University College, Hart House, Soldiers' Tower, Wycliffe College and Trinity College structures and the contemporary Massey College. All of the buildings around the Back Campus edge are recognized as architecturally significant. The Back Campus is currently used as two playing fields, a tradition expected to continue in the future.

A grove of mature elms along the western edge of the Back Campus is one of the few such stands of trees remaining on the campus.

University Development Site 22 faces the Back Campus.



Drawing DS3 - 1: Key Buildings / Focal Points / Development Sites



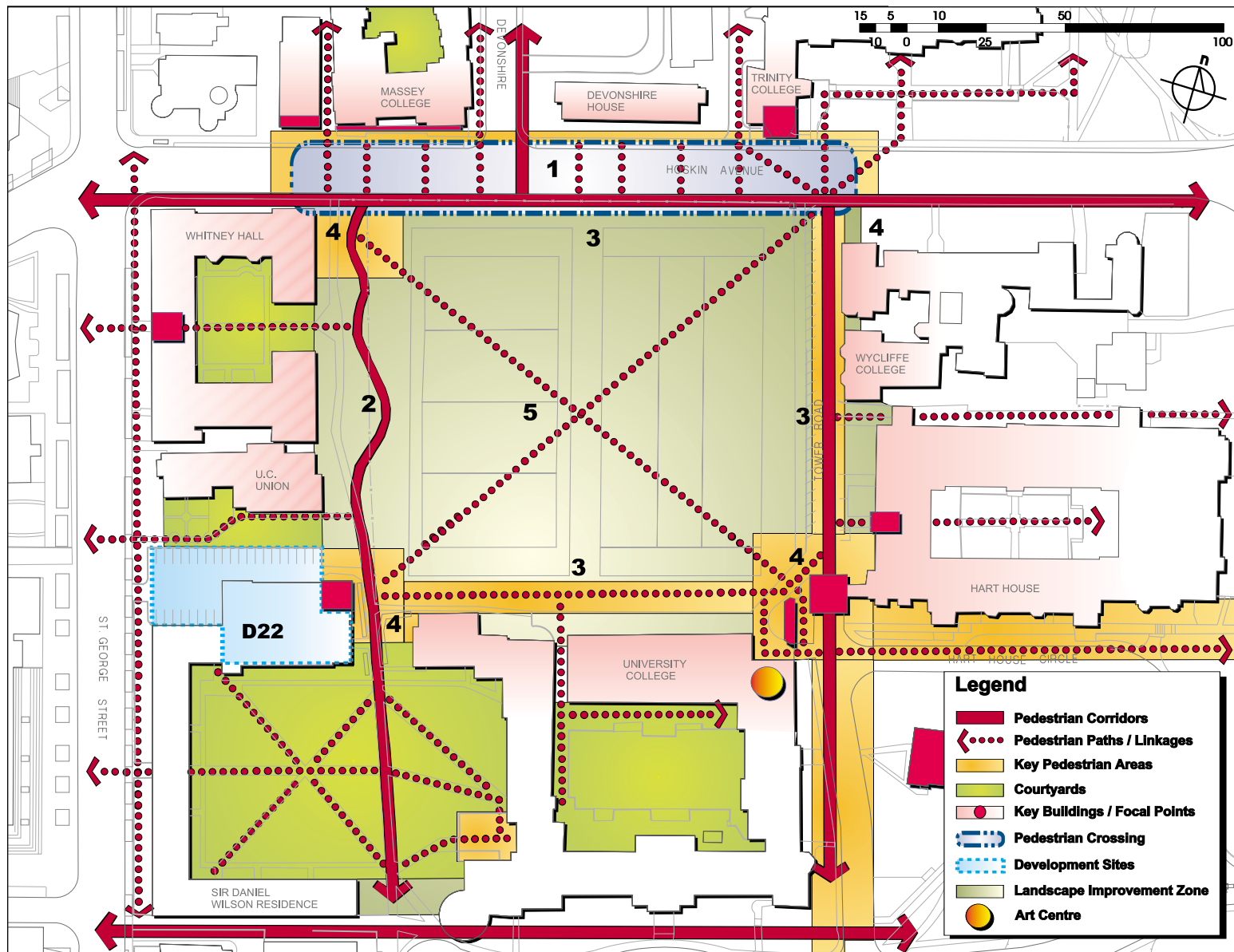
Demonstration Site 3: Back Campus

Pedestrian Movement

The following list of items includes issues related to pedestrian routes in the area of Back Campus. These issues should be considered in the redesign of the Demonstration Site. The numbered items refer to drawing **DS3-2**.

1. The Hoskin Avenue frontage of the Back Campus is a major pedestrian crossing area between the north and central sections of the campus and includes the flow to Trinity College, Massey College and Varsity Stadium.
2. There is a major pedestrian route from Devonshire Place to Hoskin Avenue through the elm grove and the Sir Daniel Wilson Residence quadrangle.
3. Pedestrians use all four edges of the Back Campus. Enhanced pathway systems would improve connections to other parts of the campus.
4. The four corners of the field are appropriate pedestrian gathering areas.
5. The Back Campus is used for diagonal pedestrian movement. Issues of snow clearing and lighting are important to these crossings.

Drawing DS3-2: Pedestrian Movement



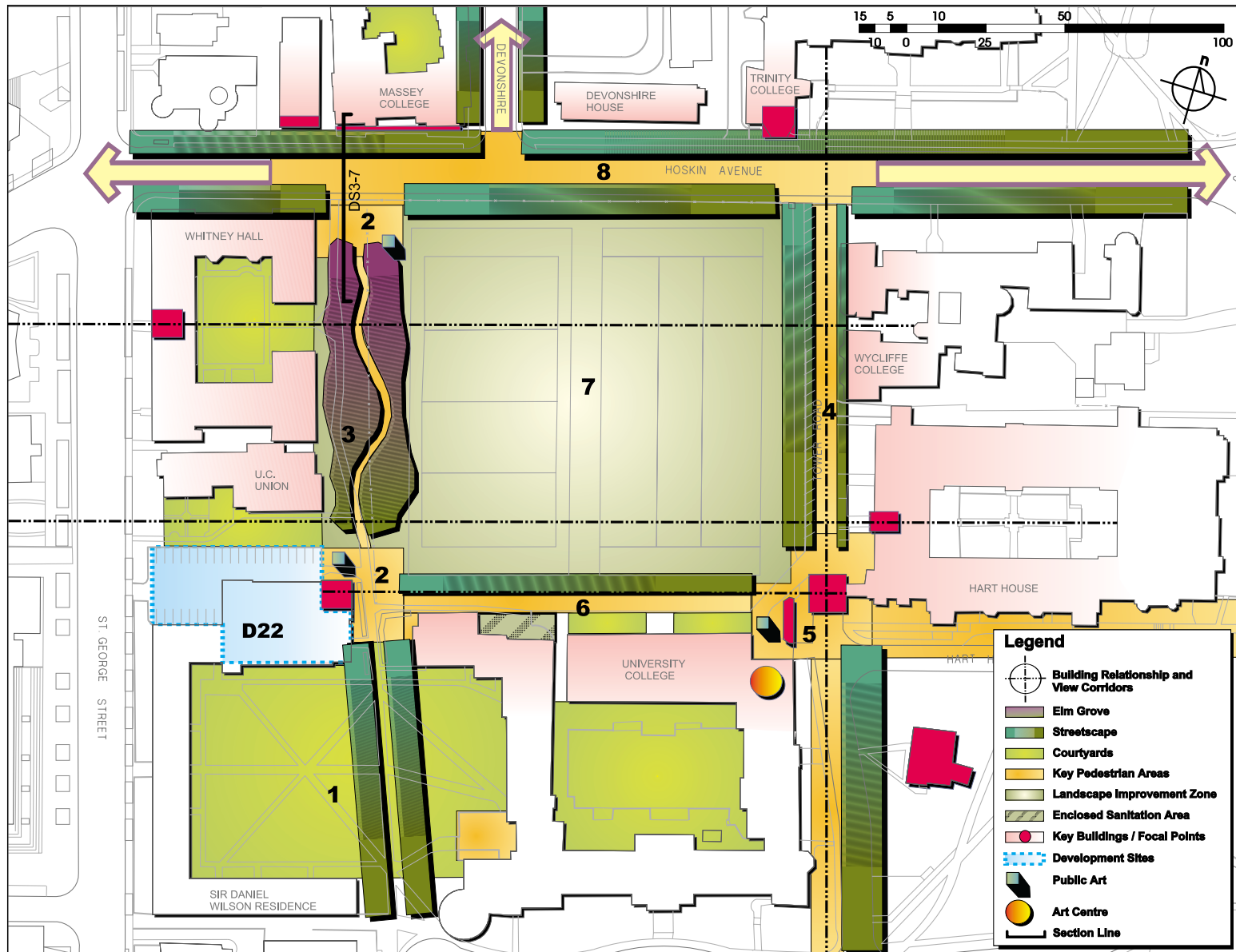
Demonstration Site 3: Back Campus

Detailed Master Plan Concept

The following list of features and concepts is proposed as the framework for this Demonstration Site. The numbered items refer to drawing **DS3-3**.

1. The walkway through the Sir Daniel Wilson Residence quadrangle should be strengthened with a structural planting of closely spaced deciduous trees along the existing pathway. The pathway should be reconstructed to match the width and material of the Back Campus and King's College Green pedestrian systems.
2. A special garden and meeting place with seating should be created in the southwest and northwest corners of the Back Campus to create a focal point of activity in this space.
3. The existing stand of mature deciduous trees should be enlarged and strengthened with additional deciduous tree planting to establish a grove condition. Seating should be provided beneath the trees.
4. The driveway to Soldiers' Tower and the passage between Front and Back Campus should be given special significance. The corridor should be converted to a feature pedestrian spine leading to the Front Campus. A double row of deciduous trees should be planted on the west side of the walkway from Hoskin Avenue to Soldiers' Tower to define the route. Perennial gardens should be established along the eastern side of the route to add visual interest.
5. The Soldiers' Tower and Memorial Wall should be incorporated into a special garden and meeting place. The northwest corner of the garden should be developed as a sculpture court under the direction of the University Art Centre. The existing McAllister Memorial Garden should be an integral part of the redesign of this space.
6. A pedestrian walk and perennial gardens should be installed along the north wall of University College. A row of deciduous trees should be planted on the north side of the walk to define the space and create interest along the building wall.
7. Two playing fields suitable for team sporting events should be installed in the centre of the Back Campus, slightly depressed below grade and properly fitted with turf systems and irrigation. These fields should be illuminated to allow pedestrian movements between sporting events.
8. The section of Hoskin Avenue between St. George Street and the crossing at Soldiers' Tower should be redesigned as a traffic table to calm automobile traffic with enhanced streetscape planting to extend the landscape of the Back Campus and to facilitate the significant pedestrian movements in this area.

Drawing DS3-3: Detailed Master Plan Concept



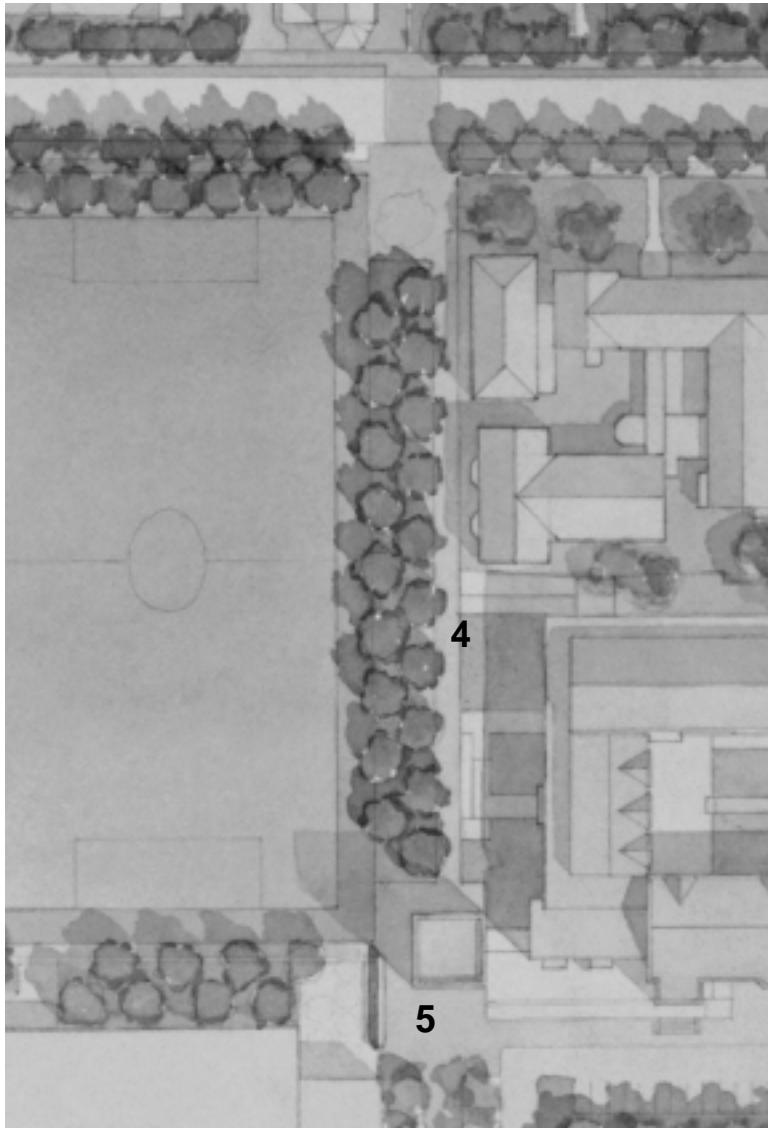
Demonstration Site 3: Back Campus

Drawing DS3-4: Back Campus Master Plan Concept



Back Campus will become a landscape of landmark status surrounded by special gardens, paths, meeting places, and two new playing fields.

Drawing DS3 - 5: Master Plan Concept



Perennial gardens and a double row of deciduous trees define and enhance *Soldiers' Tower Walk*

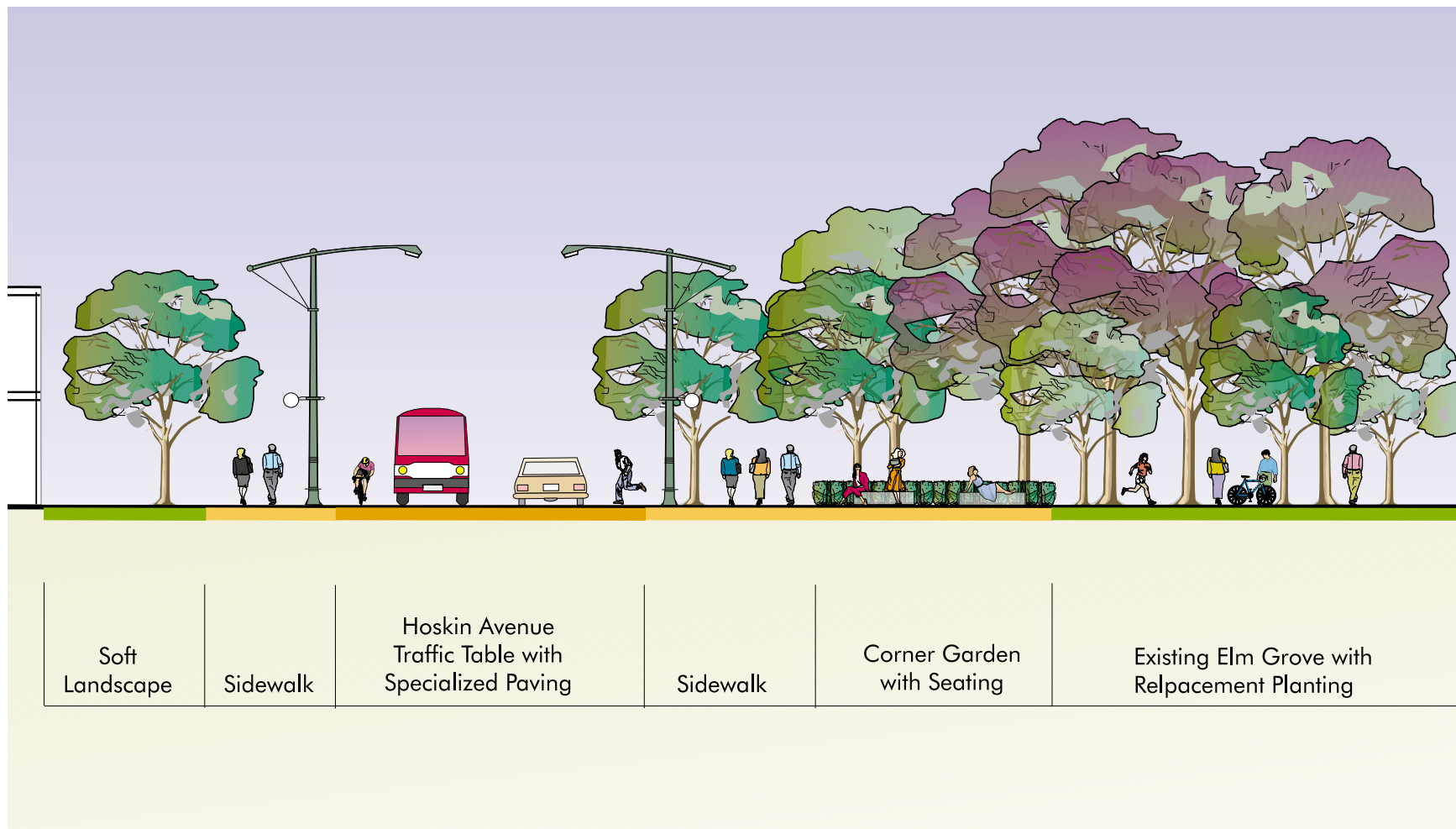


A new *sitting edge* for viewing of sporting events is provided along the perimeter of the Back Campus playing fields.

D r a w i n g D S 3 - 6 : M a s t e r P l a n C o n c e p t



Drawing DS3-7: Proposed Hoskin Avenue Cross Section



2.4 Willcocks Street - Sidney Smith Hall - New College - Huron Street Demonstration Site

Goals

- *To create a significant, landmark-quality open space and a focus for student activity on the West Campus;*
- *To create distinctive streetscapes in the West Campus, specific to the University of Toronto;*
- *To enhance pedestrian connections to the Central Campus.*

Project Summary

This Demonstration Site is intended to implement Primary Objective 7, to create a significant open space on the West Campus. Willcocks Street, between Huron and St. George Streets, has been chosen as the place to create this space. It is envisioned as a meeting area and focal point on the West Campus, with significant tree planting and a skating area for winter activity. It will provide a connection to St. George Street and a passage through to the Central Campus. A major contribution to the space will come from redesigned Huron and Willcocks Street cross sections which will allow a better pedestrian system, traffic calming and street tree planting, to demonstrate a new image for the streets of the West Campus.

Key Buildings, Focal Points and University Development Sites

Two University Development Sites have a direct frontage on Huron and Willcocks Streets:

- University Development Site 6 (Sidney Smith Hall) has frontage on both streets; and
- University Development Site 5 beside the Faculty Club has frontage on Willcocks Street.

